



Public Service Commission of the District of Columbia

Public Service for a Century

EVOLUTION OF UTILITY REGULATION IN THE DISTRICT OF COLUMBIA 1913-2013

**Dr. Phylicia Fauntleroy Bowman,
Executive Director**

pbowman@psc.dc.gov

**Centennial Anniversary Symposium and
Celebration**

Kellogg Conference Center at Gallaudet University

Friday, March 15, 2013

Washington, DC



Public Service Commission of the District of Columbia

Public Service for a Century

TABLE OF CONTENTS 1913-2013

	Page
1. Location of Annual Reports, Formal Cases & Orders Back to 1913 on the Website	3
2. Four Regulatory Eras	4
3. Major Changes in Organizational Structure	5
4. Sample 1913-1914 Salaries of PUC Staff	10
5. Diversity	11
6. Formal Cases & Orders by Industry	13
7. Rate Case Performance	17
8. Trends in Rates	22
9. Low-Income Discount Program Participation – 1980s+	26
10. Competition –1999+	29
11. Educating Consumers and Informing the Public	36
12. Thank You Credits	37



PUBLIC SERVICE COMMISSION

of the District of Columbia

People Service for a Century

[PSC Home](#) | [Website Usage FAQs](#) | [Contact Us](#) | [Sitemap](#)

[ABOUT THE PSC](#) | [eDOCKET SYSTEM](#) | [ORDERS & REGULATIONS](#) | [ELECTRIC](#) | [NATURAL GAS](#) | [TELECOM](#) | [CONSUMERS' CORNER](#) | [NEWSROOM](#) | [REPORTS & PLANS](#)

News Flash: -1 and FC 1027 :: 2013 Commission Open Meetings Schedule :: Public Notice re WGL's 2012 Annual Report on the Vintage Coupling Encapsulation and Repl

PSC eDocket System



- Search Current Dockets
- Index of Formal Cases and Order Captions
- Most Recent Filings
- Current Open Cases
- Subscribe to Commission Dockets
- Commission-Directed Actions Calendar

[...more](#)

Login to eDocket System to Make an eFiling (Username & Password Required)

EducateDCongress



Public Service for a Century
Learn how the Commission has served the District for 100 years

People Saving & Conserving
Learn how to use energy efficiently in order to save money

People Selecting & Choosing
Learn how to choose your electric, natural gas, and local telephone service providers

Hot Topics

Electric System Reliability

- FC766 - Comprehensive Electric Reliability
- FC982 - Service Outages - EQSS
- FC982 - MSO Restoration Standards and MSO Reports
- FC1026 - Feasibility of Burying Electric Lines
- FC991 - Inspections of Pepco's Underground System
- FC1056 - Smart Meters
- FC1086 - Pepco's Energy Wise Rewards Program

Other Cases

- FC1090 - Reliability of Verizon's Network Infrastructure
- FC1093 - WGL Rate Case
- FC1102 - Maintenance of Verizon's Copper Network
- FC1103 - Pepco Rate Case

Have a Utility Concern?

- I need help understanding my bill
- I want to lower my utility bills
- I want to file a complaint
- Consumer Bill of Rights

[...more](#)

Electric

Consumers | **Suppliers**

- Electric Customer Choice FAQs
- Compare Electric Suppliers' Offers*
- How to Choose an Electric Supplier
- Rates and Statistical Data

[...more](#)

Natural Gas

Consumers | **Suppliers**

- Natural Gas Customer Choice FAQs
- Compare Natural Gas Suppliers' Offers*
- How to Choose a Commodity Natural Gas Supplier
- Rates and Statistical Data

[...more](#)

Telecom

Consumers | **Providers**

- Telecom Customer Choice FAQs
- Compare Telecom Providers' Offers*
- How to Choose a Local Telephone Service Provider
- Rates and Statistical Data

[...more](#)

About The Public Service Commission

The mission of the Public Service Commission of the District of Columbia is to serve the public interest by ensuring that financially healthy electric, natural gas, and telecom companies provide safe, reliable and quality utility services at reasonable rates for District of Columbia residential, business and government customers.

- Mission and Goals
- Employee Directory
- Commissioners
- Employment Opportunities
- Organizational Structure
- PSC Overview

Current PSC News

[Press Releases](#) | [Public Meeting Notices](#)

- Fiscal Year 2014 Budget Hearing Testimony
- The Commission Welcomes Ms. Naza Shelly as a Paralegal Specialist in the Office of the General Counsel.
- The Commission Welcomes Ms. Anjanette Parker as a Program Support Specialist in the Office of the Technical and Regulatory Analysis.
- The Commission Welcomes Mr. Jason Benati as a Senior Accountant in the Office of the Technical and Regulatory Analysis.

[...more](#)

Website Traffic

Use this graph as a resource to track the Public Service Commission of the District of



Media Streaming

Public Meetings

Chairman Betty Ann Kane's opening statement in the



Outreach Program

- Calendar of Events
- Outreach Activity Request





Public Service Commission of the District of Columbia

Public Service for a Century

4

FOUR ERAS OF UTILITY REGULATION IN THE DISTRICT

1. 1913 – 1926 - Formative Years
President Appointed Three PUC Commissioners who were also members of the DC Board of Commissioners
Valuation Studies of Rate Base
Struggles with the Utility Companies
Established Regulations
2. 1927 – 1954 - Traditional Regulation
President Appointed Two PUC Commissioners Who Were Not DC Commissioners; Third
PUC Commissioner was also DC Engineer Commissioner
Transportation Dominated the Agenda
Non-Transportation Cases were Mostly Rate and Financing Cases
Electric and Gas Rates Set Using Sliding Scale Arrangement
3. 1955 – 1974 - Modern Regulation
President Appointed Mayor-Commissioner and Deputy Mayor-Commissioner and the
Mayor-Commissioner Appointed One PSC Commissioner to Replace the Engineer Commissioner
Securities Regulation was Added & Name Changed to Public Service Commission in 1964 and Bus & Streetcar
Regulation Eliminated in 1965
Expansion of Topics and Issues beyond Rates and Financing Cases
Revenue Requirement Formula Utilized in Rate Cases
4. 1975 -2013 - Universal Service Under Economic Regulation
Home Rule Act Allowed Elected Mayor to Appoint Three Commissioners and Subsequently Chairpersons (1984)
Interstate Bus Jurisdiction Eliminated in 1979
Economic Pricing Guided Rate Setting
Low-Income Discount Programs Approved and Implemented
Competition Fostered
Energy Conservation, Energy Efficiency, and Renewable Energy Promoted
Reliability and Quality of Service Are Major Issues

ORGANIZATIONAL STRUCTURE

PUBLIC UTILITIES COMMISSION OF THE DISTRICT OF COLUMBIA

1913 (*19 employees by year-end*)

**Chester Harding –
DC Commissioner &
PUC Chairman & Cuno Rudolph,
DC Commissioner**

**New DC Commissioners-July 1913
F.L. Siddons – Replaced Rudolph
O.P Newman**

**General Counsel
(DC Corporation Counsel)
Edward H. Thomas
C. H. Syme**

**Executive Officer
J.L. Schley**

**Bureau of Transit
And Equipment
Inspection
H. C. Eddy**

**Electrical Inspection
Bureau**

**Gas Inspection
Bureau
E. G. Runyan**

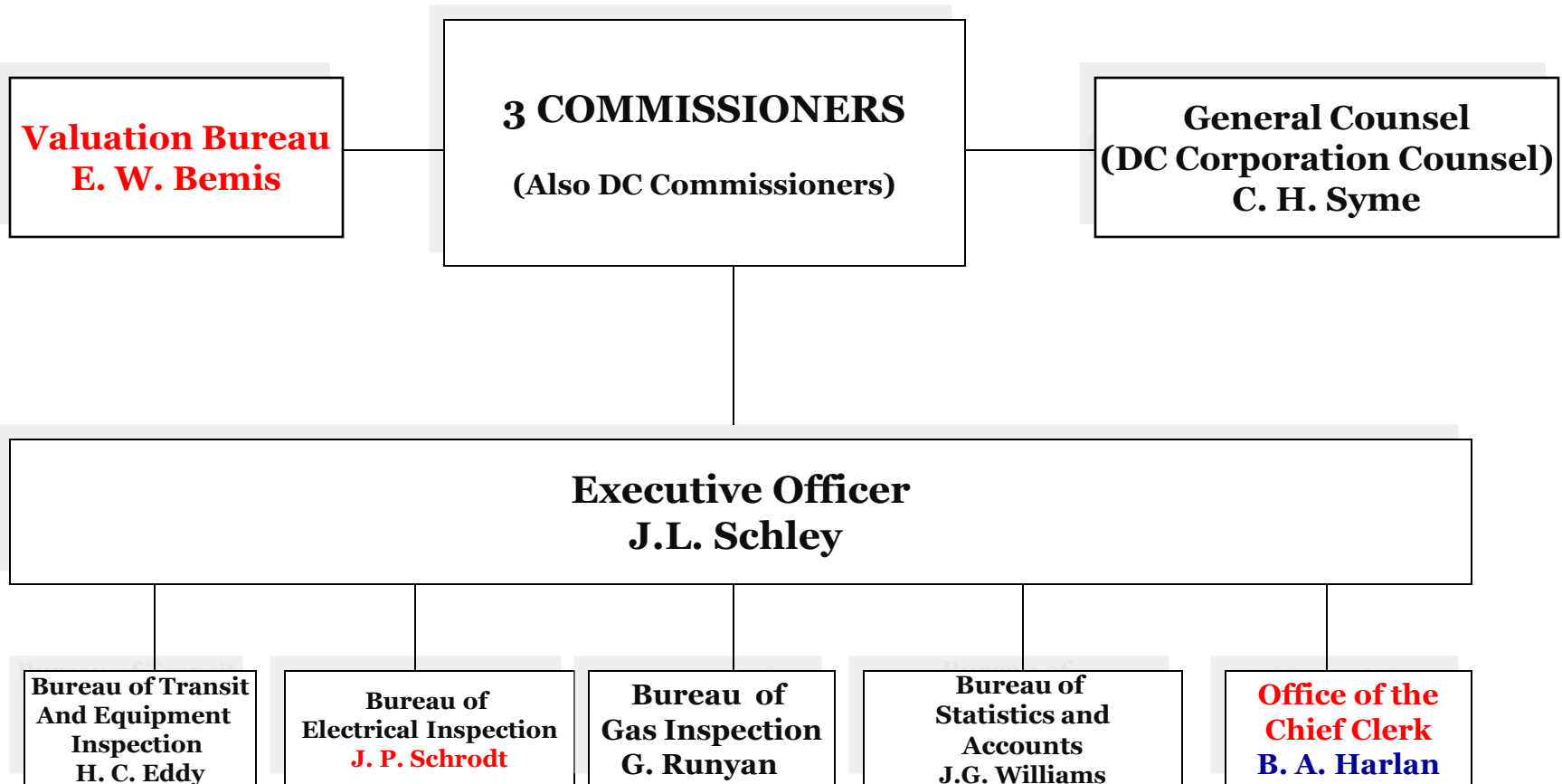
**Bureau of
Statistics and
Accounts
J. G. Williams**

**Executive Office
B. A. Harlan**

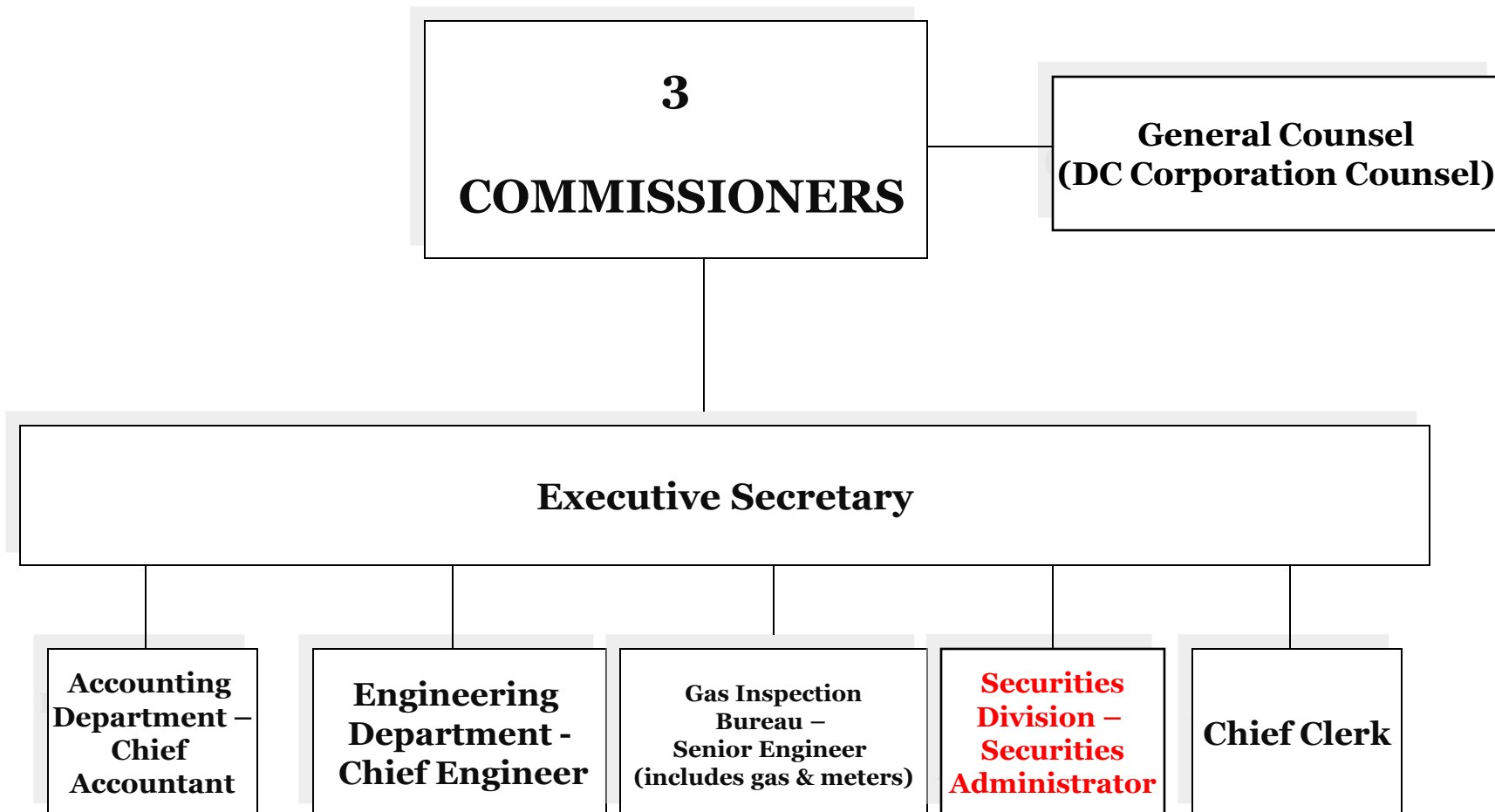
PUBLIC UTILITIES COMMISSION OF THE DISTRICT OF COLUMBIA

1914 – 1915

(100 employees by year-end)



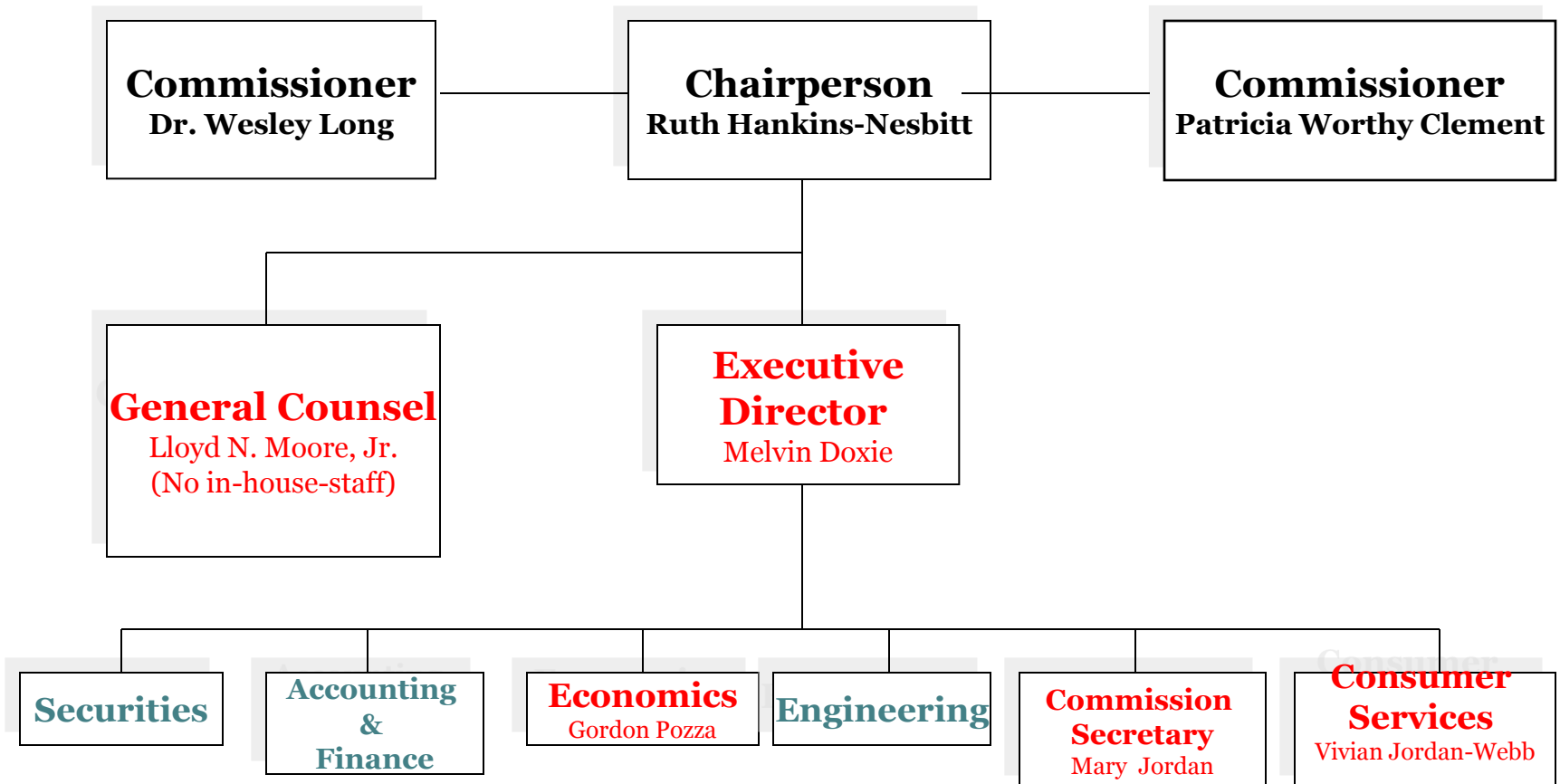
PUBLIC SERVICE COMMISSION OF THE DISTRICT OF COLUMBIA
1964
(15-20 Budgeted Positions)



PUBLIC SERVICE COMMISSION OF THE DISTRICT OF COLUMBIA

1980

(27 Budgeted Positions)



The Commission moved to the Old City Hall at 451 Indiana Avenue, NW in 1980. Several new offices were created in 1980 (in red above). The first in-house General Counsel was Lloyd N. Moore, Jr. He was the first General Counsel who was not the D.C. Corporation Counsel. Mel Dixie was the first Executive Director and his new office handled administrative matters such as personnel, budget, and procurement. Gordon Pozza was the first Director of the Office of Economics. The first Director of the Office of Commission Secretary was Mary Jordan. The Office of Consumer Services (OCS) was established to implement the new Consumer Bill of Rights. The first OCS Director was Vivian Jordan-Webb.



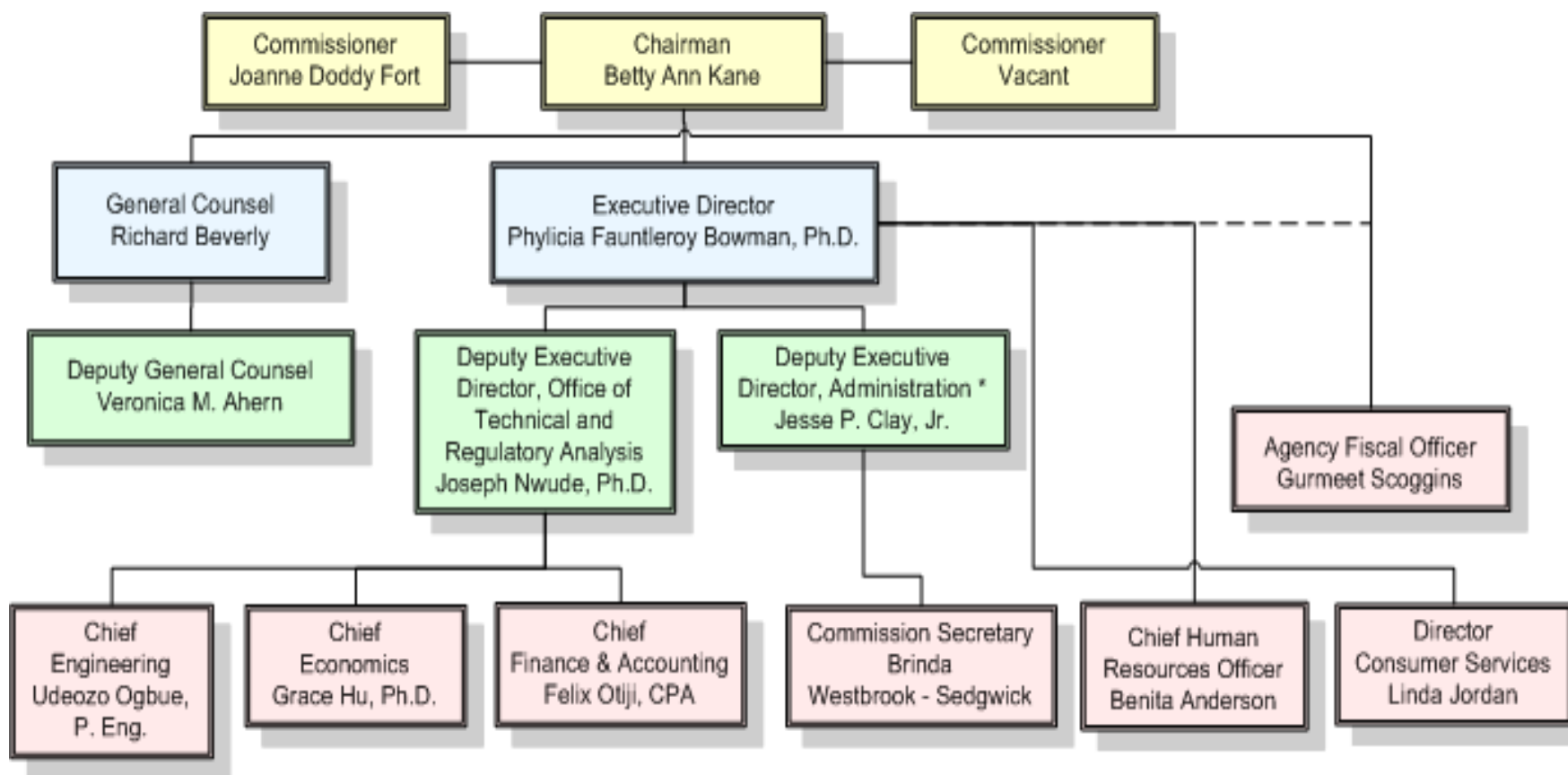
Public Service Commission of the District of Columbia

Public Service for a Century

9

PUBLIC SERVICE COMMISSION OF THE DISTRICT OF COLUMBIA

ORGANIZATIONAL STRUCTURE 2013 (72.6 FTEs)



*Staff includes the Chief Information Technology Officer



District of Columbia Public Service Commission

10

Public Service for a Century

PERSONNEL MILESTONES

Milestone	Name	Dates
First PUC Commissioner/Chairman/ DC Board of Commissioners	Chester Harding	1913-1914
First Female Employee	Blanche Miller	1913-1914
First Female Commissioner	Mable Boardman	1920-1921
First PUC Commissioner not Member of DC Board of Commissioners	John Childress	1927-1929
Longest Serving Chairman	James Flanagan	1942-1953
First African American Commissioner/Chairman	George E.C. Hayes	1955-1961
First African American Staff Member	W.H.H. Terrell	1919? -1933
Last Engineer Commissioner/Member of DC Board of Commissioners	Robert E. Mathe	1966-1971
First Commissioner/Chairperson appointed by First Elected Mayor & Second Female Commissioner	Ruth Hankins-Nesbitt	1975-1989
First Mayoral-Appointed Chairman	Patricia M. Worthy	1984-1991
Longest-Serving Commissioner	Agnes Alexander Yates	1993-2008
First Latino Commissioner/Chairman	Angel Cartagena	2000-2003



Public Service Commission of the District of Columbia

11

Public Service for a Century

1913 -- SAMPLE SALARIES OF PUC EMPLOYEES

Title	Monthly -\$	Annual - \$
Accountant/Statistician	250	3,000
Engineer	210	2,520
Statistical Clerk	116.66	
Inspector	110	1,320
Stenographer & Clerk	90	1,080
Messenger	50	600
Ranges		
Inspectors	60-125	720-1,500
Clerks	50- 75	600-900
Inspectors at the end of 1913		
Inspectors	85-125	1,020 – 1,500

1914 -- SAMPLE SALARIES OF VALUATION BUREAU

Director of the Bureau	100 per day	26,400
Agents	100 – 200 per month	1,200 – 2,400
Helpers	1.50 per day	400
Computers		

Sources: DC PSC Orders 1913-1914.



Public Service Commission of the District of Columbia

12

Public Service for a Century

CURRENT EMPLOYEES





District of Columbia Public Service Commission

Public Service for a Century

13

DIVERSITY OF CURRENT 65 PSC STAFF

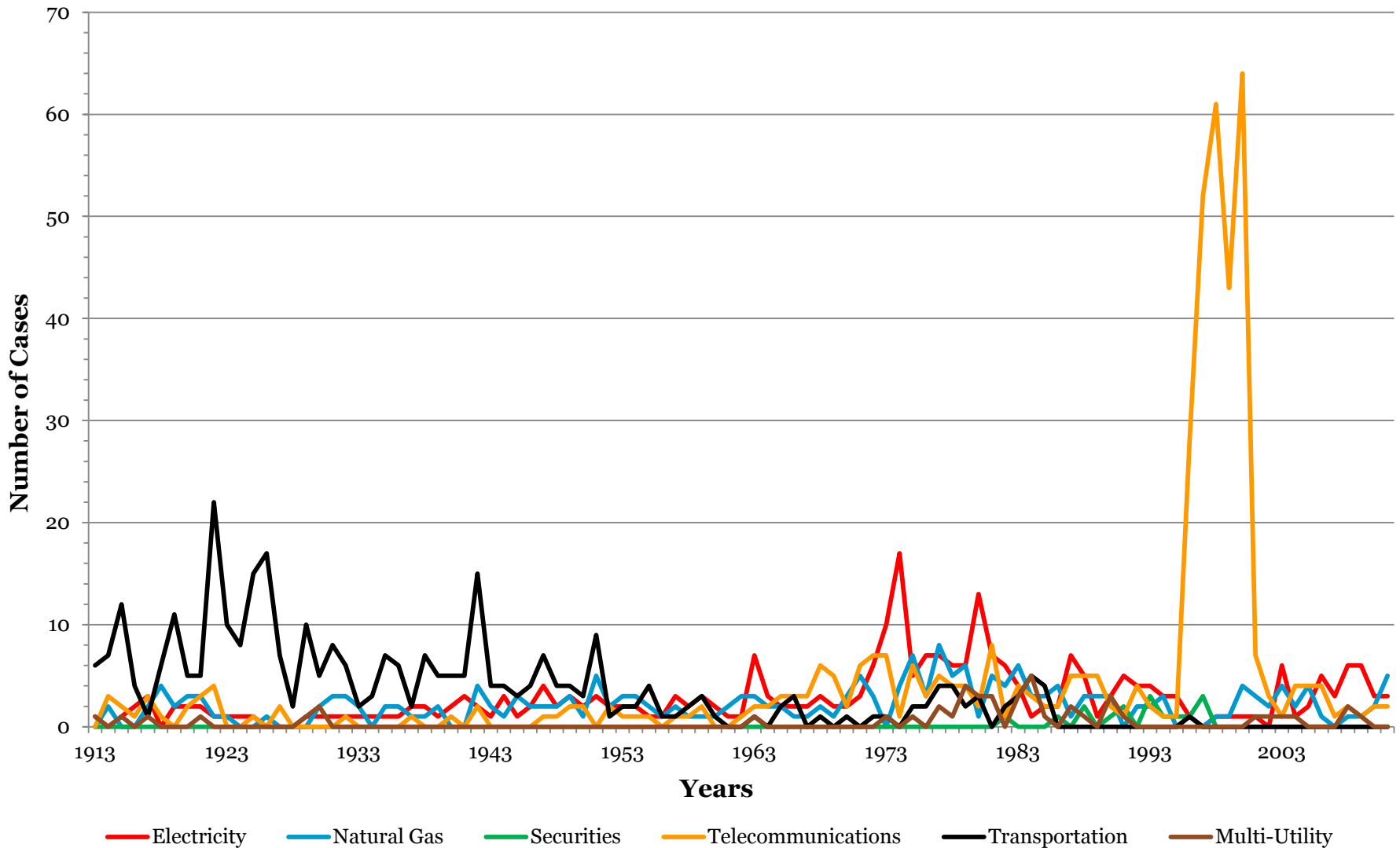
Category	Number	Percentage
Men	35	54
Women	30	46
Black	45	69
White	15	23
Asian	5	8
<u>Foreign Born</u>	16	25

10 Countries

Costa Rica
India
Jamaica
Kenya
Mali
Nigeria
Philippines
Russia
Taiwan
Venezuela

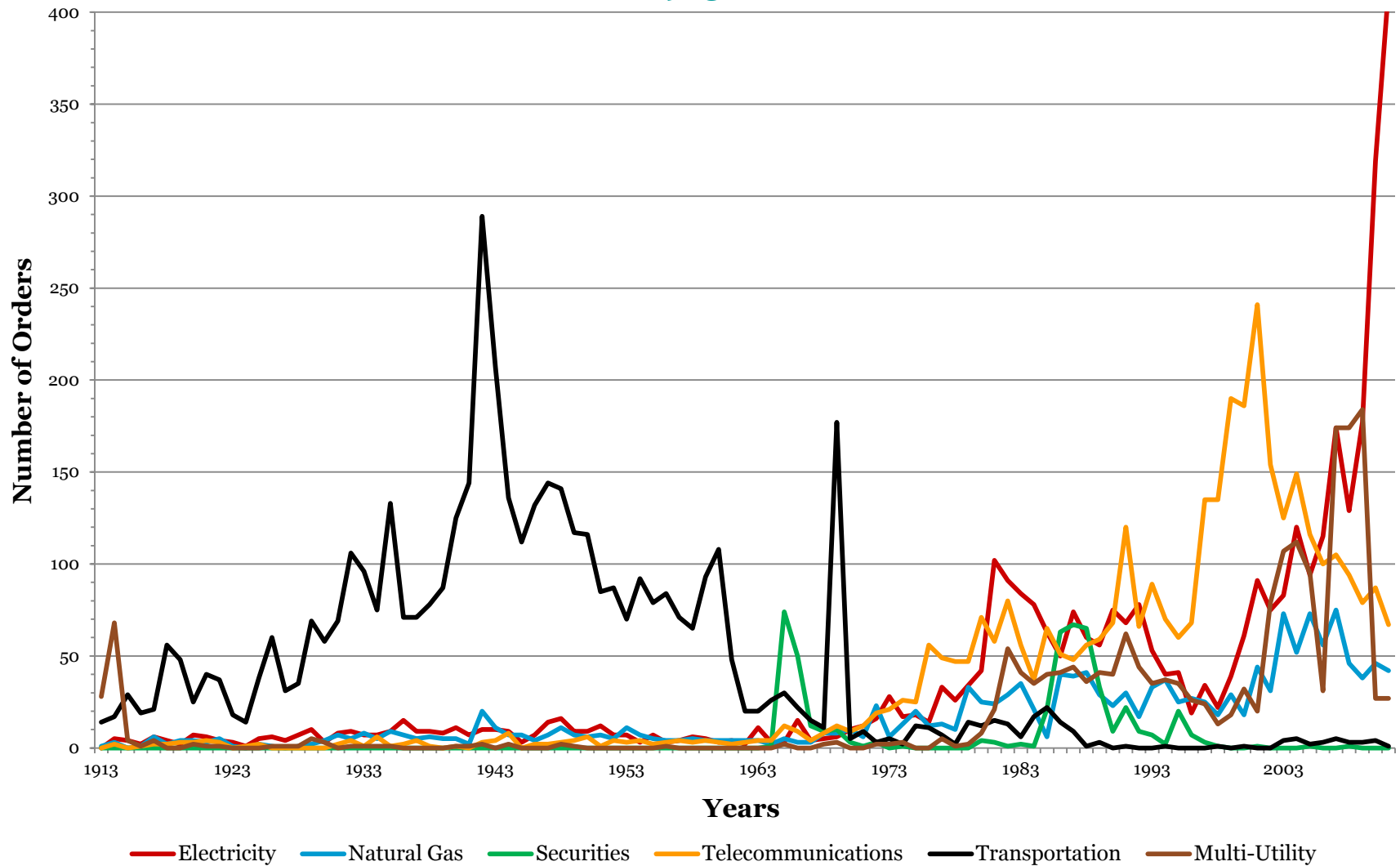
Source: DCPSC

FORMAL CASES OPENED, BY INDUSTRY 1913-2011



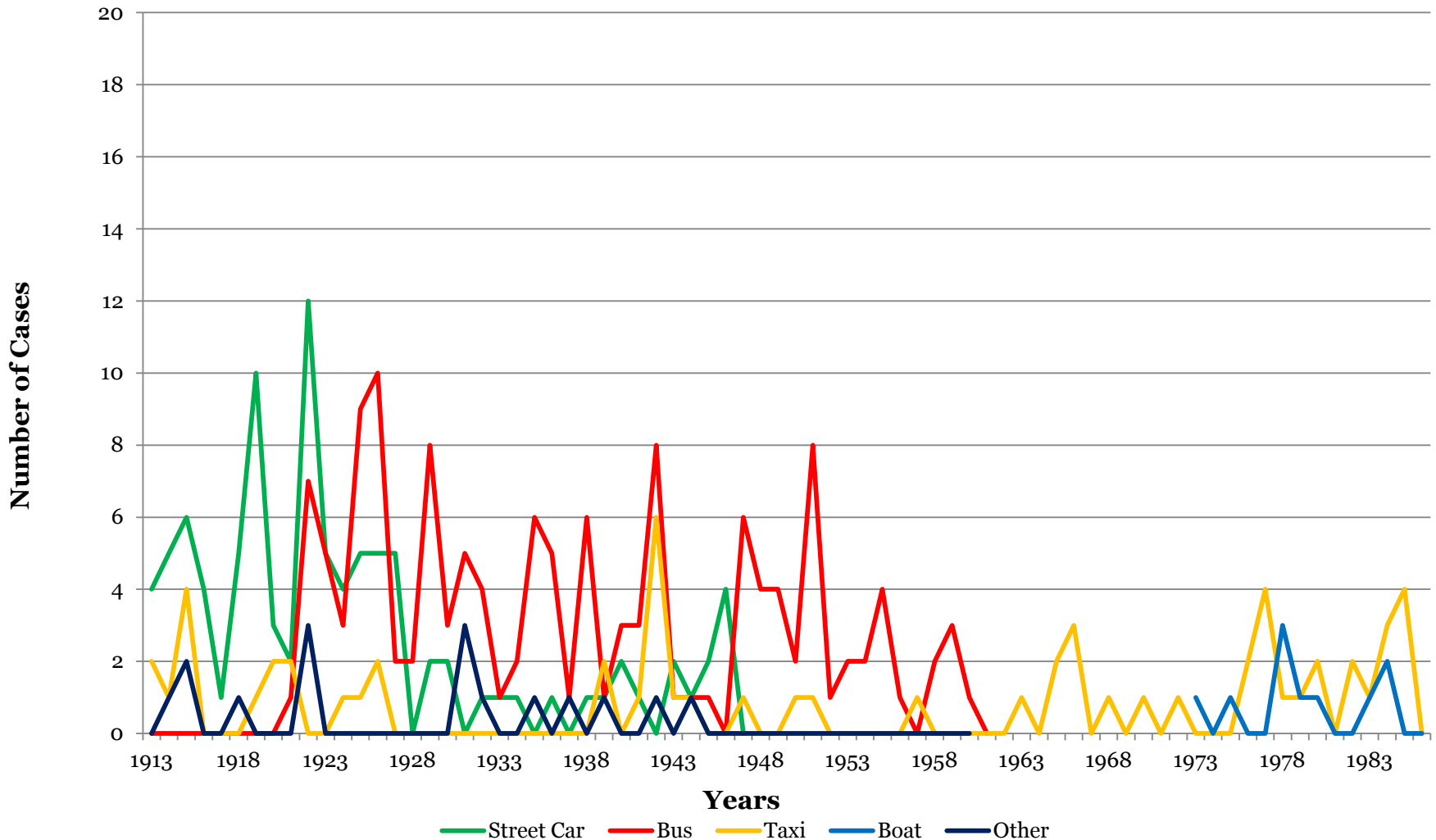
Source: Index of Formal Cases (1913 to date) available on Public Service Commission of the District of Columbia's website at <http://www.dcpsc.org>.

COMMISSION ORDERS, BY INDUSTRY 1913-2011



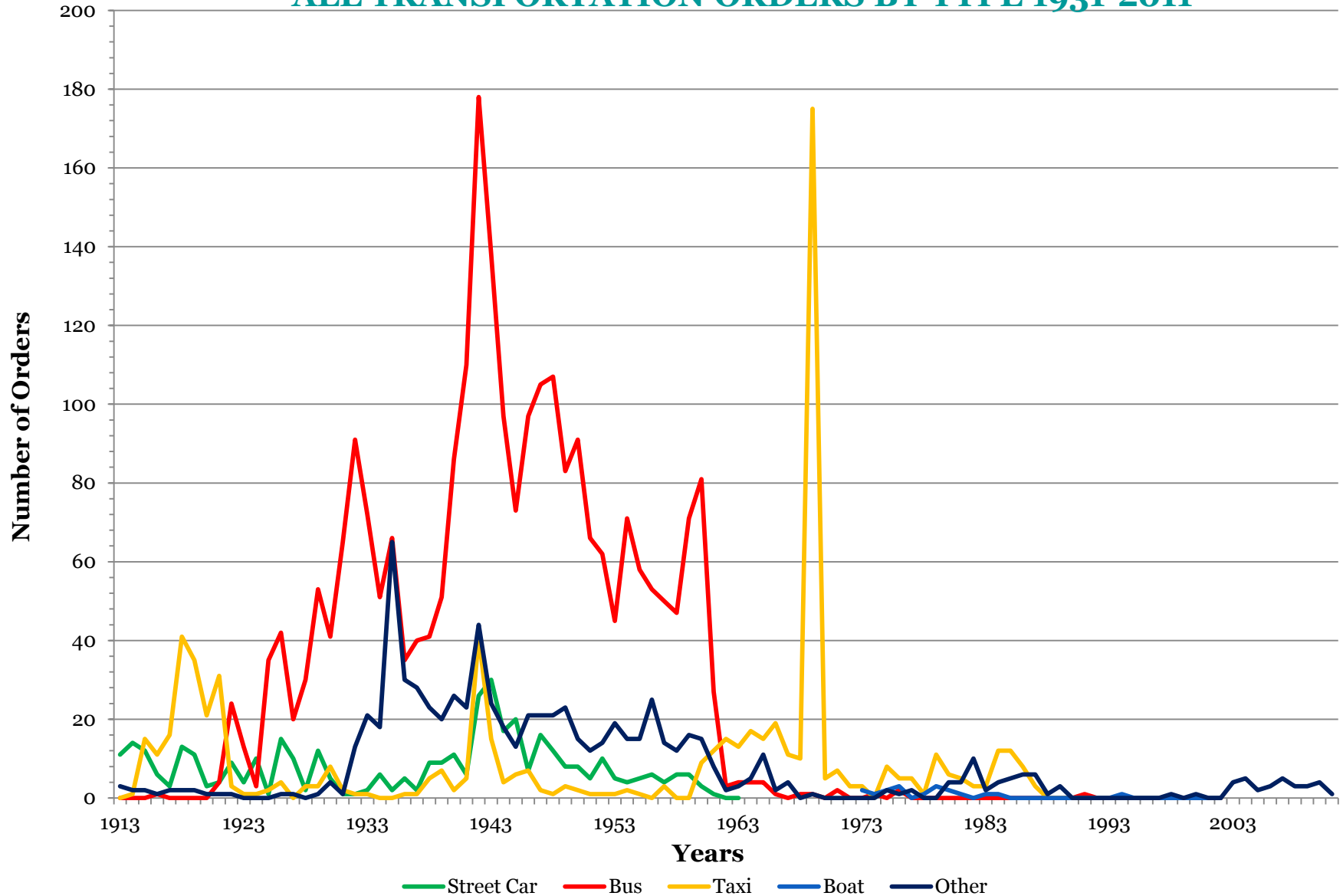
Source: Index of Orders (1913 to date) available on Public Service Commission of the District of Columbia's website at <http://www.dcpsc.org>.

TRANSPORTATION FORMAL CASES OPENED, BY TYPE 1913-1986



Source: Index of Formal Cases (1913 to date) available on Public Service Commission of the District of Columbia's website at <http://www.dcpsc.org>.

ALL TRANSPORTATION ORDERS BY TYPE 1931-2011



Source: Index of Orders (1913 to date) available on Public Service Commission of the District of Columbia's website at <http://www.dcpsc.org>.



Public Service Commission of the District of Columbia

18

Public Service for a Century

RATE CASE DECISIONS (Years Cases Were Opened)

Three Utility Companies Combined

Revenue Requirement - % Approved	33.19%
Rate of Return - % Approved	89.08%
Return on Equity - % Approved	88.45%
Average Duration of Rate Cases	12 months

Pepco (1948-2011)

Revenue Requirement - % Approved	31.8%
Rate of Return - % Approved	93.74%
Return on Equity - % Approved	89.40%
Average Duration of Rate Cases	13 months

WGL (1949-2006)

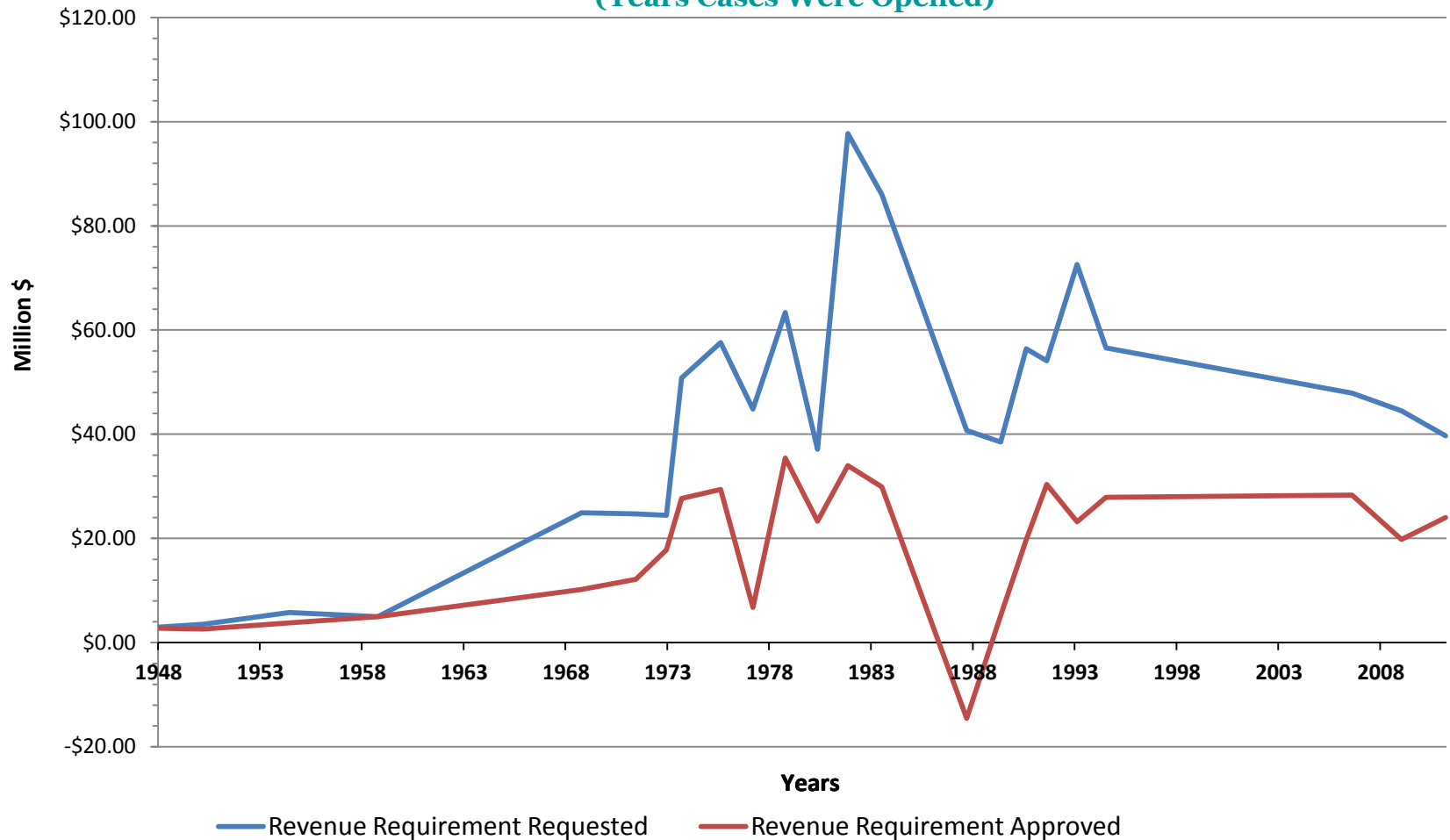
Revenue Requirement - % Approved	17.68%
Rate of Return - % Approved	91.15%
Return on Equity - % Approved	88.49%
Average Duration of Rate Cases	7 months

C&P/Bell Atlantic/Verizon (1947-1992)

Revenue Requirement - % Approved	57.9%
Rate of Return - % Approved	82.45%
Return on Equity - % Approved	89.477
Average Duration of Rate Cases	10 months

Source: Rate Case Orders (1913 to date) available on Public Service Commission of the District of Columbia's website at <http://www.dcpssc.org>.

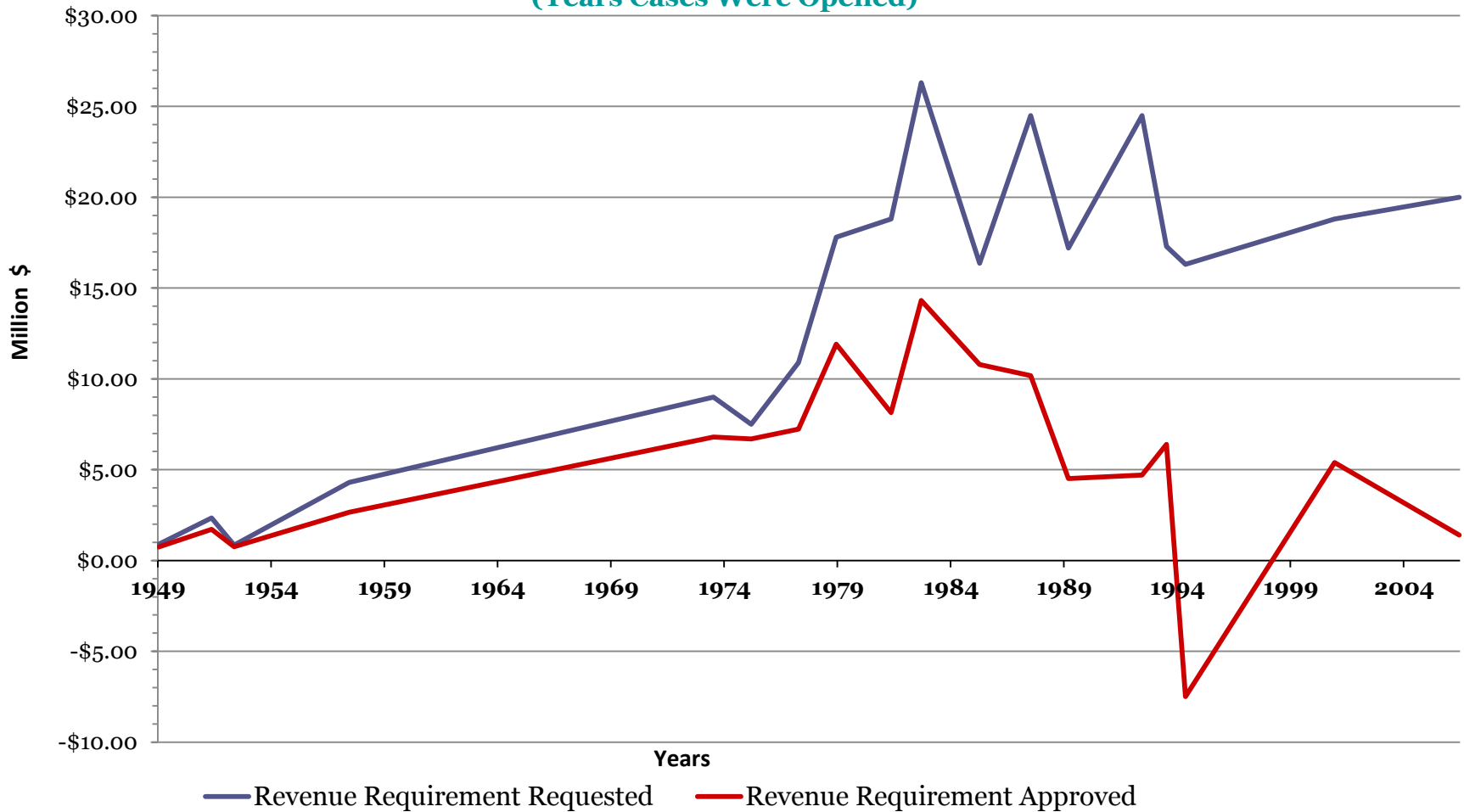
PEPCO - REVENUE REQUIREMENT - REQUESTED AND APPROVED 1948 - 2011 (Years Cases Were Opened)



*The lines between each point indicate gaps where data are not available

Source: Index of Orders (1913 to date) available on Public Service Commission of the District of Columbia's website at <http://www.dcpsc.org>.

WGL - REVENUE REQUIREMENT - REQUESTED AND APPROVED 1949 - 2006 (Years Cases Were Opened)



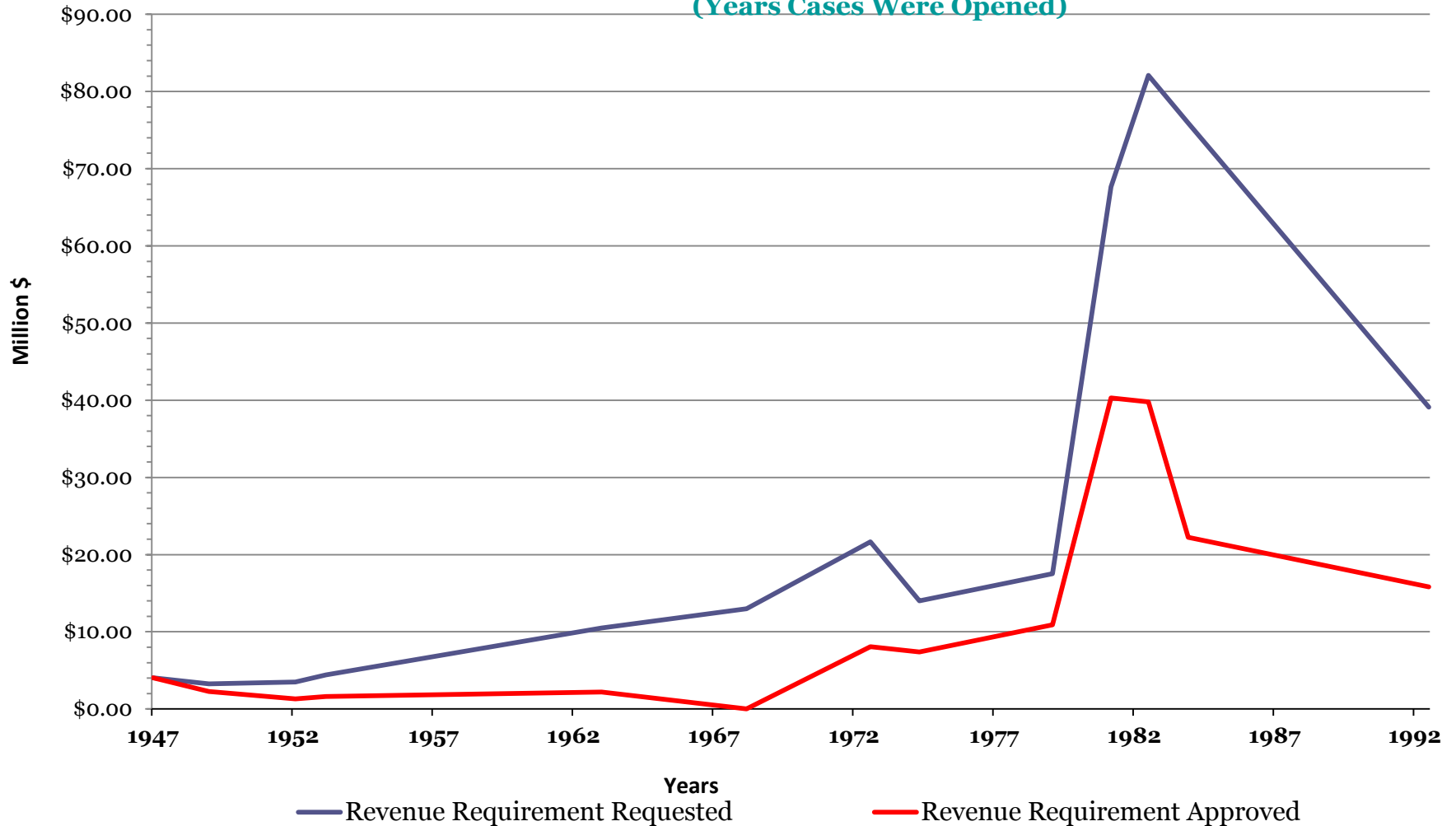
*The lines between each point indicate gaps where data are not available .

Source: Index of Orders (1913 to date) available on Public Service Commission of the District of Columbia's website at <http://www.dcpsc.org>.

C&P - REVENUE REQUIREMENT - REQUESTED AND APPROVED

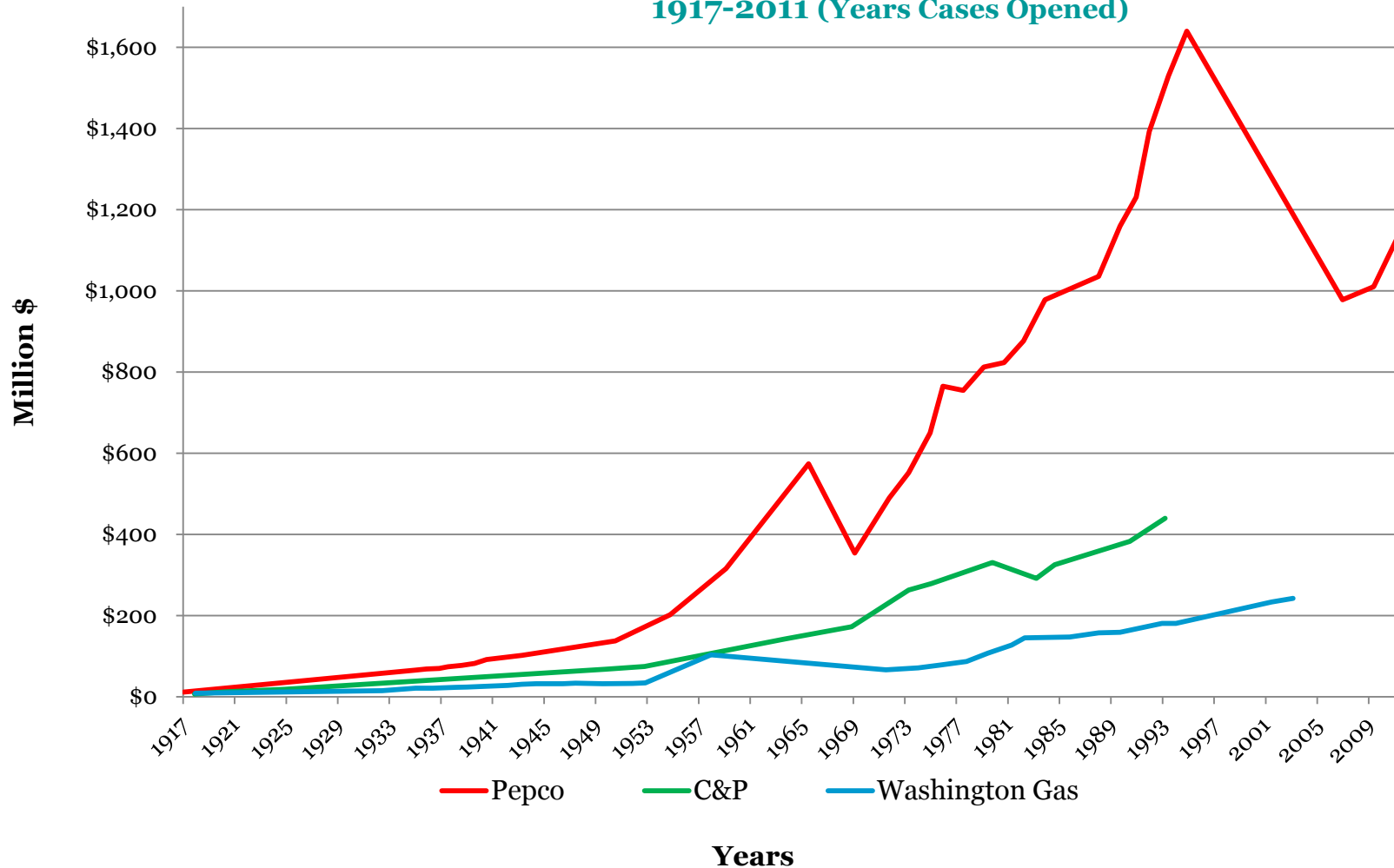
1947 - 1992

(Years Cases Were Opened)



*The lines between each point indicate gaps where data are not available .

ALL UTILITIES - RATE BASE APPROVED (Million \$) 1917-2011 (Years Cases Opened)



*The lines between each point indicate gaps where data are not available .

Source: Index of Orders (1913 to date) available on Public Service Commission of the District of Columbia's website at <http://www.dcpssc.org>.

MONTHLY RESIDENTIAL RATES 1913 & 2013

C&P	Pepco	WGL
		1913
\$4.00 per month	10 cents per kwh	8.5 cents per therm
		2013
Verizon		
\$13.78 per month	13.04 cents per kWh [3.8 cents (distribution) ¹ 8.63 cents (generation) ² .63 cents (transmission)] ⁴	\$1.103 per therm [50 cents (distribution) 63 cents (WGL's PGC)] ³

MONTHLY LOW-INCOME DISCOUNT RATES

	1980s	
Economy II (1985)	RAR⁵ (1982)	RES⁶ (1987)
\$4.00 with free 30 call allowance increased to 60 free calls	5.77 cents per kwh	4.6 cents per therm credit on first 150 therms per month for 5 winter months
	2013	
Economy II (since 1992)	RAD⁷	RES
\$3.00 - <65 years of age \$1.00 - 65 + years of age Unlimited calls	9.30 cents per kwh [2.89 cents per kwh (distribution) 5.85 cents per kwh (generation) .57 cents per kwh (transmission)]	21.63 cents per therm (credit) for 6 winter months plus a credit on PGC when it exceeds 150% of 1997-1999 level.

¹ Distribution rates set by the Commission in a rate case

² Market-based

³ Market-based

⁴ Set by FERC

⁵ Residential Aid Rider

⁶ Residential Essential Services

⁷ Residential Aid Discount

www.washingtongas.com
PLEASE RETAIN THIS PORTION FOR YOUR RECORDS

ACCOUNT INFORMATION

Service Address:	Gas Use	Reading	Date	Method
Mailed: 05/17/12	Current Reading	6242	05/14/12	READ BY CO.
Account Number	Previous Reading	6200	04/19/12	READ BY CO.
Meter ID No.	CCF of Gas Used			
Rate Class	Unmetered Gas Light (CCF) +			
Level	Total CCF of Gas Used	42		
Next Meter Reading Date	Conversion Factor	X 1.012		
Days in This Billing Period	Total Therms (Th) Used	42.5		

12-MONTH ENERGY USE HISTORY				GAS USAGE DETAIL		CHARGES	
Month	Temp.	Th	Days				
04/12	57	58	29	TOTAL THERMS USED	42.5	PREVIOUS BILL AMOUNT	62.42
03/12	47	52	30	DISTRIBUTION SERVICE		PAYMENTS RECEIVED	62.42
02/12	59	158	32	DISTRIBUTION CHARGE		CHARGES THIS PERIOD	
01/12	41	128	31	5.25 TH @ 8.3214	13.66	GAS USAGE	50.40
12/11	47	100	33	CUSTOMER CHARGE	7.98	TOTAL THIS PERIOD	50.40
11/11	55	63	30	DC RIGHTS-OF-WAY FEE	1.33		
10/11	62	28	29	NATURAL GAS SUPPLY SERVICE			
09/11	68	9	32	PGC # 8.5953	23.60	TOTAL DUE	\$ 50.40
08/11	65	8	29				
07/11	65	19	29	SUSTAINABLE ENERGY TRUST FUND	0.26		
06/11	68	26	30	ENERGY ASSISTANCE TRUST FUND	0.29	TO AVOID LATE PAYMENT CHARGES, FULL PAYMENT MUST BE RECEIVED BY 06/05/12.	
05/11	61	33	29	STATE & LOCAL			
04/11	59	72	29	DELIVERY TAX @ .070100	3.00		
Total Th		780					
				TOTAL GAS CHARGES	\$ 50.40		

Page 1 of 2

Account No:

Bill Issue Date:

Service Period:

Service Address:

Pepco Telephone Contacts:

Customer Care - 24/7	202-433-7500
Power Outages - Available Anytime	1-877-737-2662
Life-Threatening Emergencies - Available Anytime	202-472-3432
Hearing Impaired (TTY) - 24/7	202-472-3249
Stable Gaslight - 24/7	202-472-4641
Toll-Free Weatherline for service territory - 24/7	1-800-424-8028
Miss Utility (gas) online you go - available Anytime	202-265-7177

Meter Summary

Account Summary

Billing Information				
Meter No.	Location	Previous Reading	Present Reading	Units
TX1A04040240	Residential-R	686	706	1
				910

Prior Balance

\$151.94

Payments Received

\$559.00 CR

Balance Forward

\$407.66 CR

Current Charges This Period

\$134.55

CREDIT BALANCE

\$291.51 CR

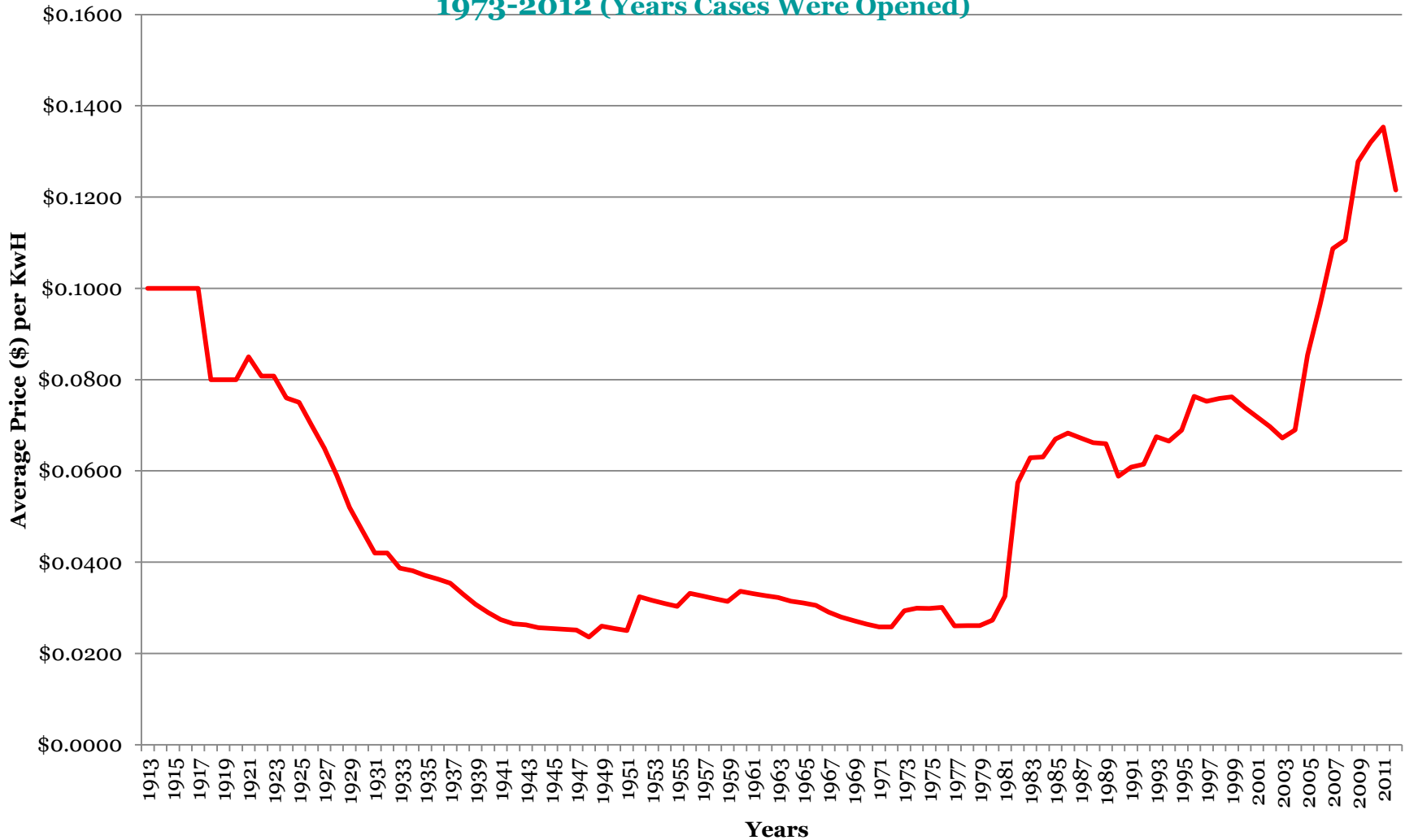
The present reading is an actual reading.

Your next scheduled meter reading is August 21, 2012.

Source: Index of Orders (1913 to date) available on Public Service Commission of the District of Columbia's website at <http://www.dcpsc.org>.

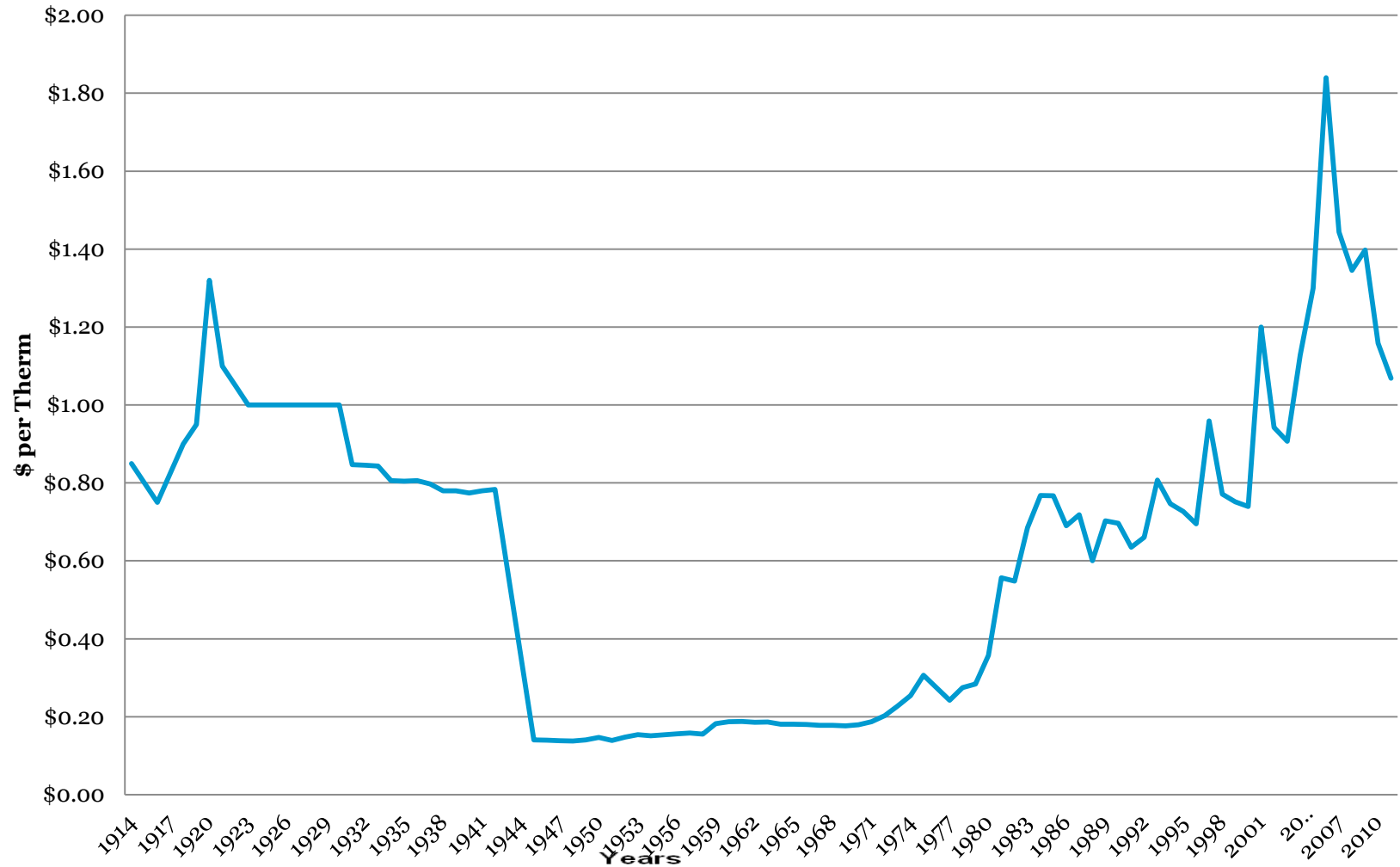
AVERAGE MONTHLY RESIDENTIAL ELECTRICITY RATES

1973-2012 (Years Cases Were Opened)



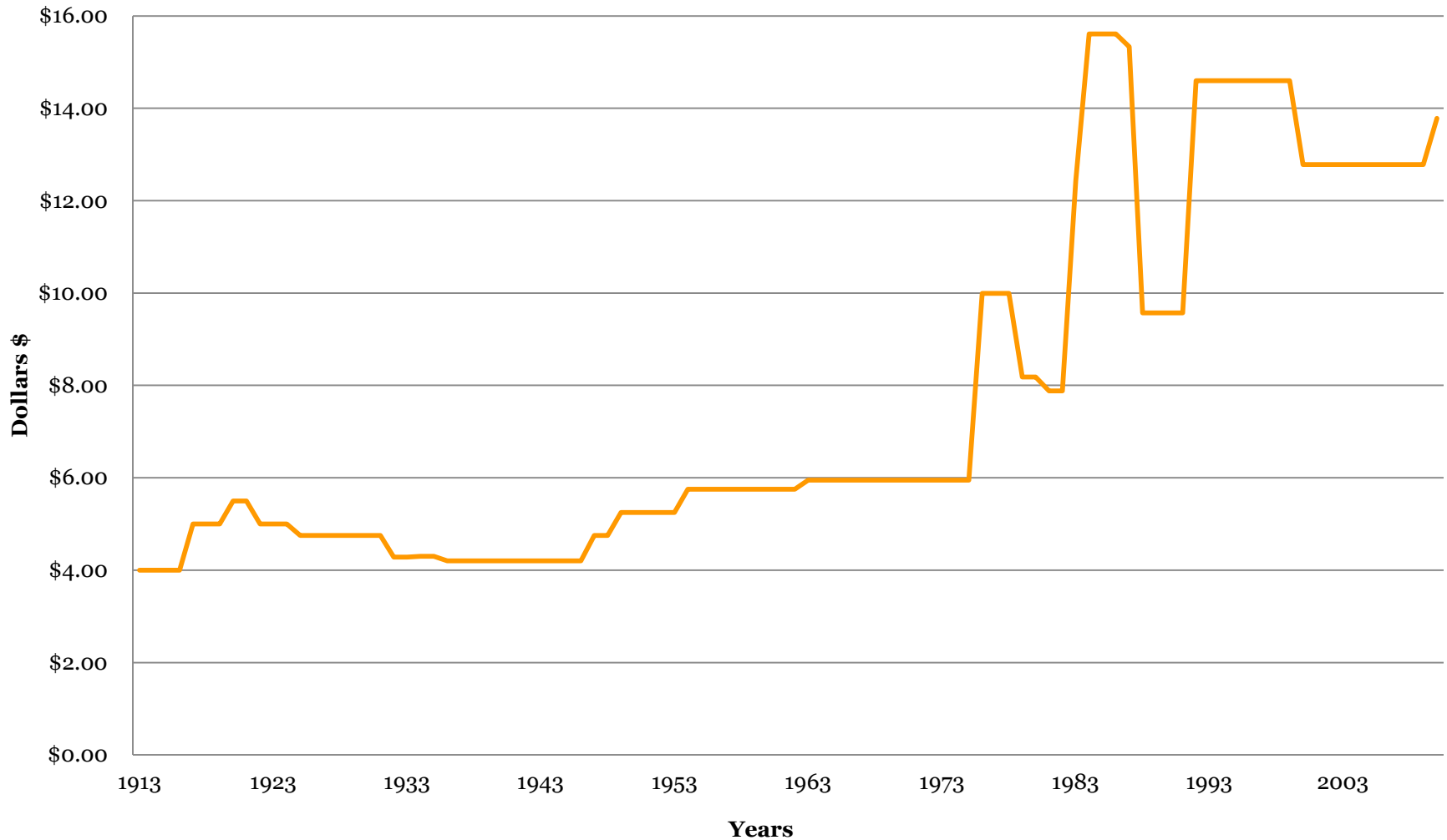
Source: Index of Orders (1913 to date) available on Public Service Commission of the District of Columbia's website at <http://www.dcpsc.org>.

AVERAGE MONTHLY RESIDENTIAL WINTER GAS RATES 1914 -2011 (Years Cases Were Opened)



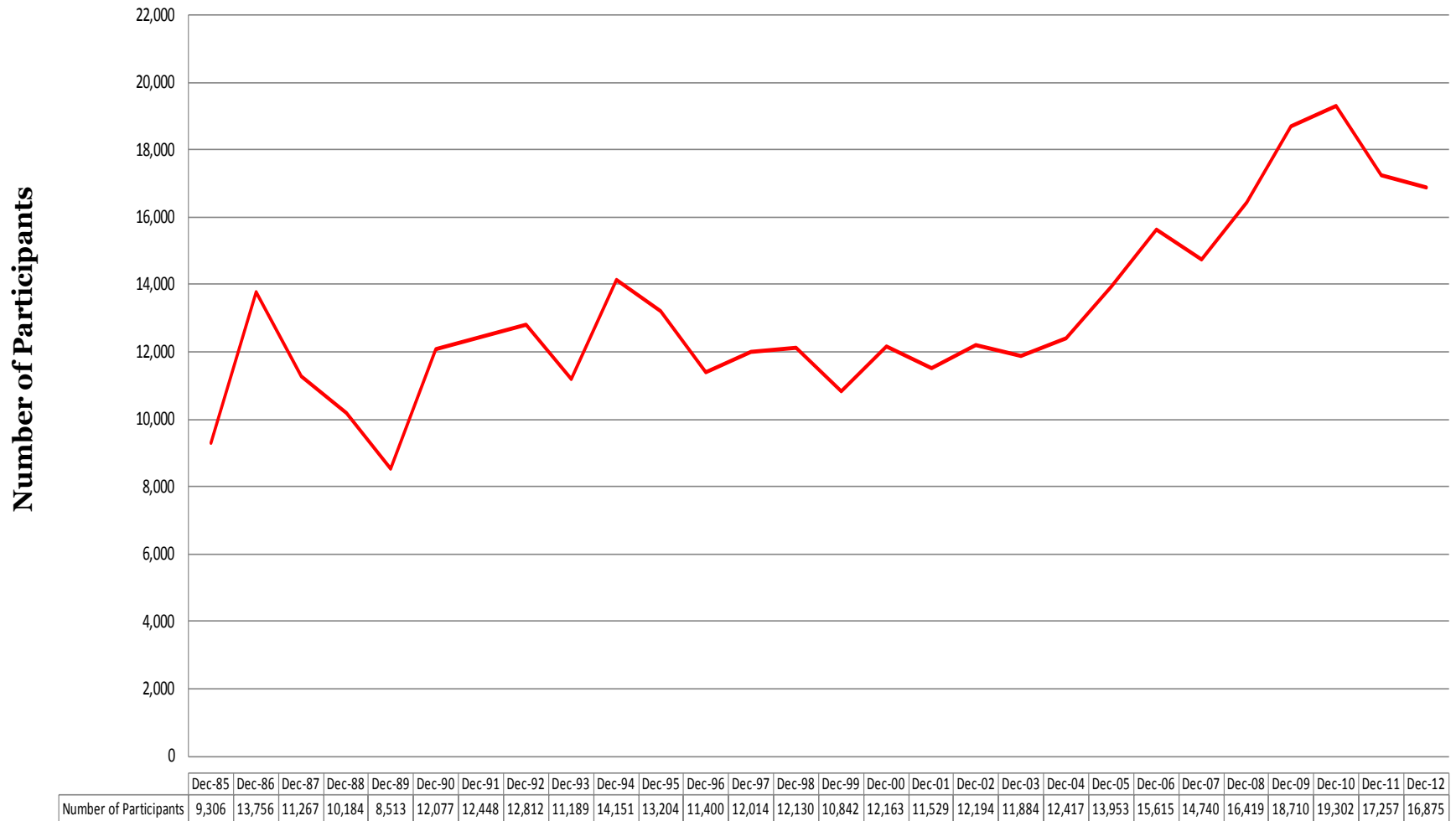
Source: Index of Orders (1913 to date) available on Public Service Commission of the District of Columbia's website at <http://www.dcpsc.org>.

**AVERAGE C&P/BELL ATLANTIC/VERIZON
MONTHLY RESIDENTIAL SINGLE LINE FLAT RATES
1913-2012 (Years Cases Were Opened)**



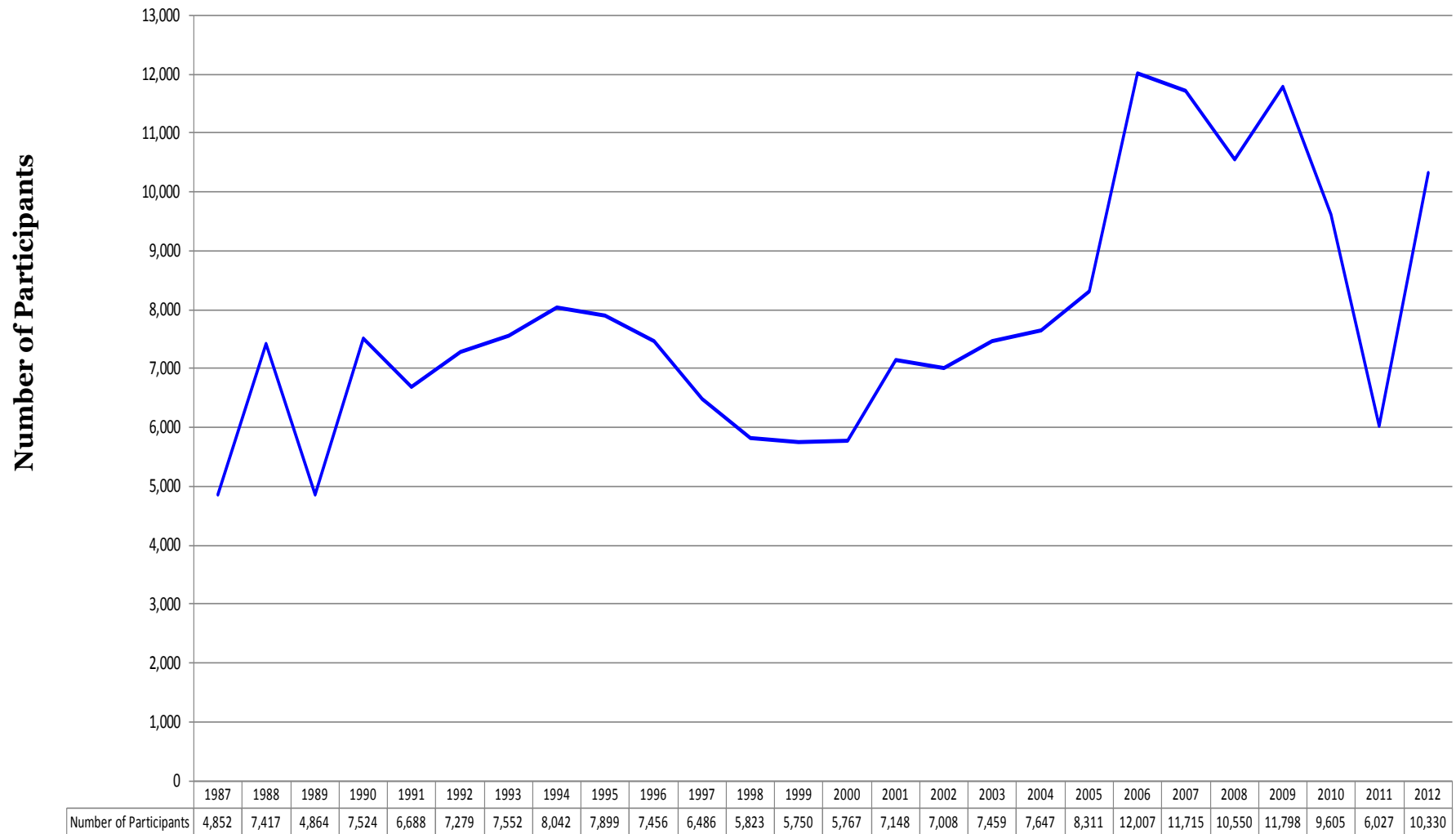
Source: Index of Orders (1913 to date) available on Public Service Commission of the District of Columbia's website at <http://www.dcpsc.org>.

PARTICIPATION IN PEPCO'S LOW-INCOME RESIDENTIAL AID DISCOUNT (RAD) PROGRAM 1985-2012



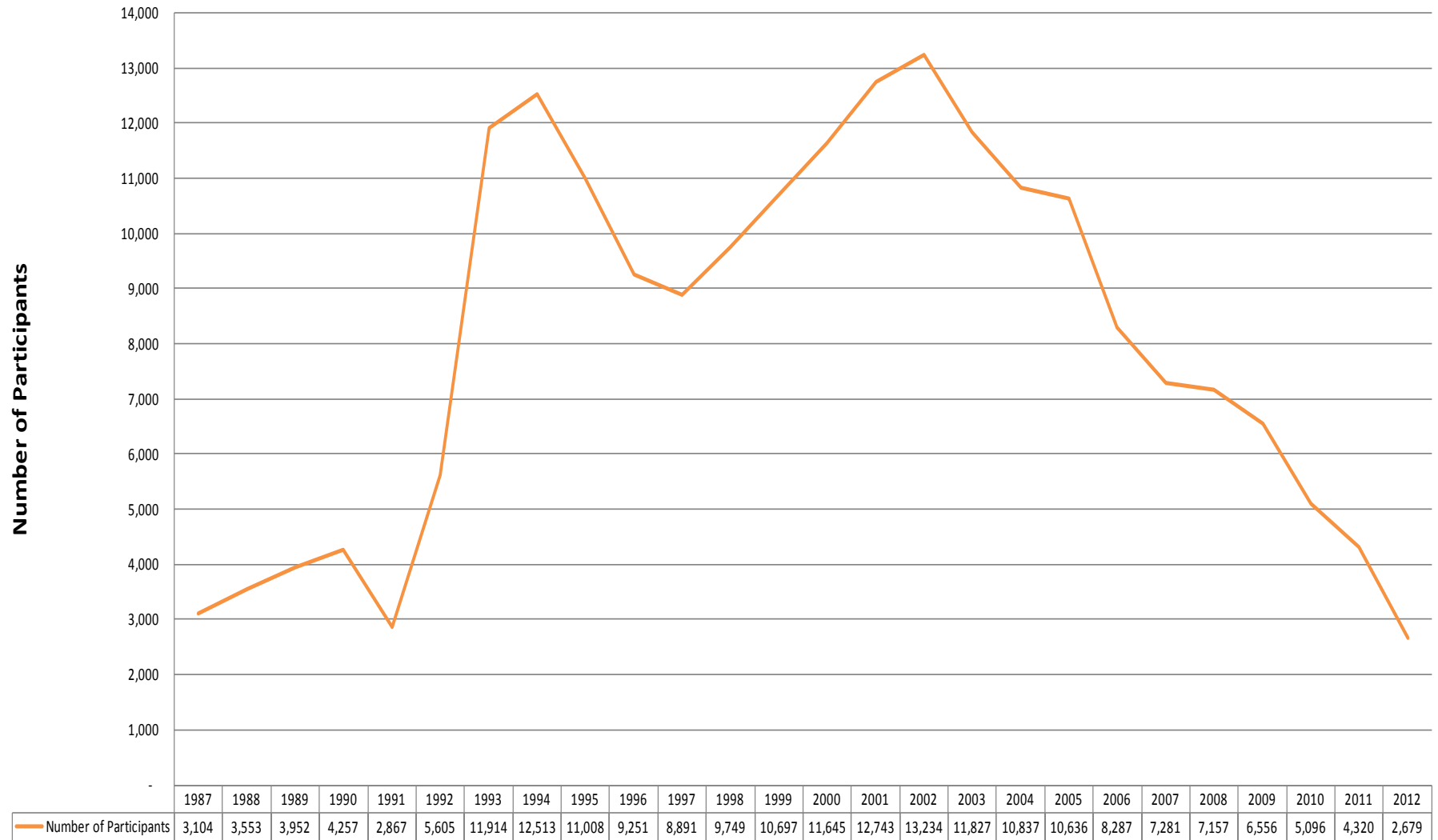
Source: Pepco's and DC Energy Office's Reports filed in F.C. No. 813 and available on Public Service Commission of the District of Columbia's website at <http://www.dcpsc.org>.

PARTICIPATION IN WGL's LOW-INCOME RESIDENTIAL ESSENTIAL SERVICE (RES) PROGRAM 1987-2012



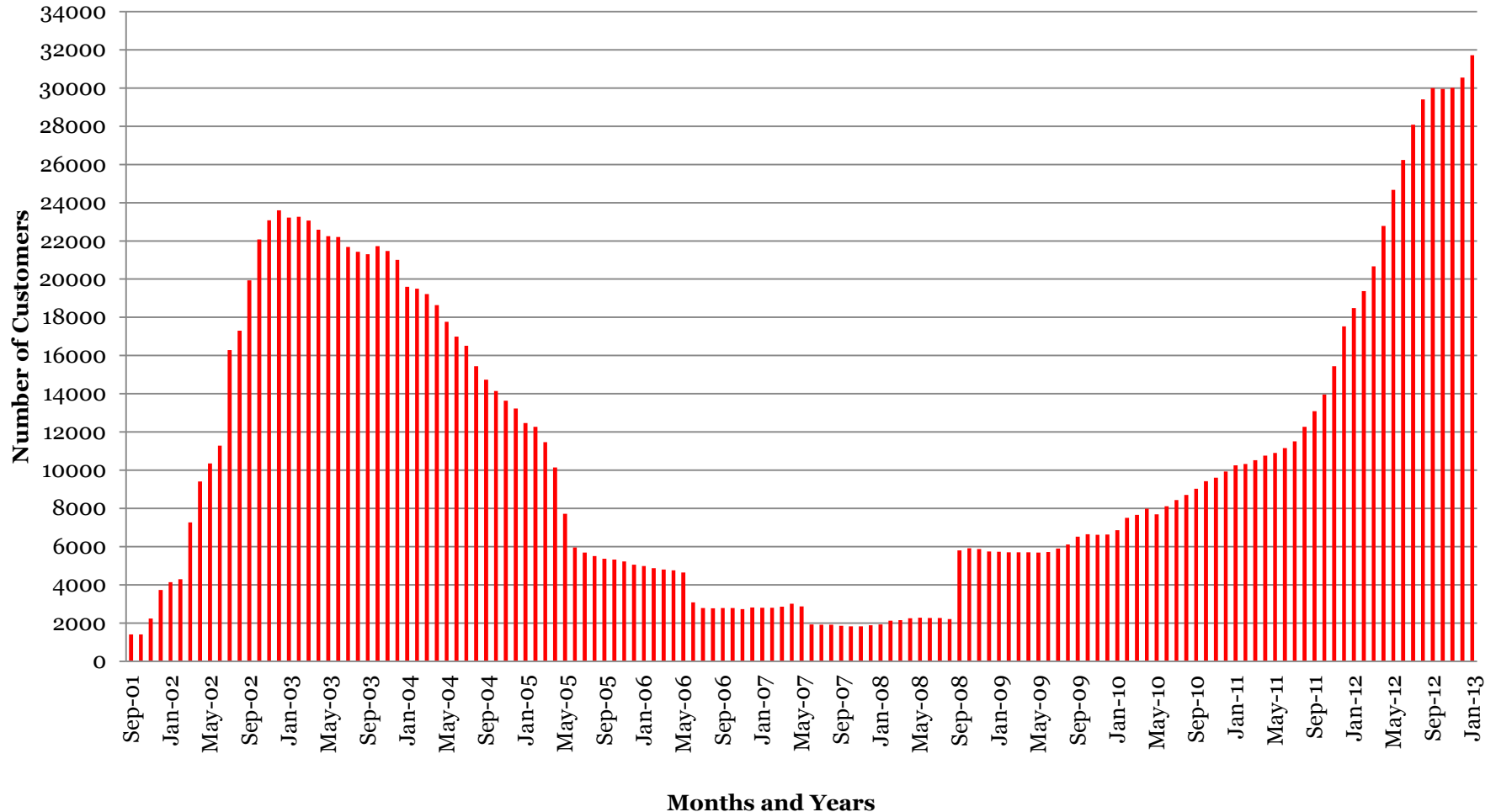
Source: WGL's and DC Energy Office's Reports filed in F.C. No. 840 and available on Public Service Commission of the District of Columbia's website at <http://www.dcpsc.org>.

PARTICIPATION IN THE LOW-INCOME ECONOMY II TELEPHONE PROGRAM 1987-2012



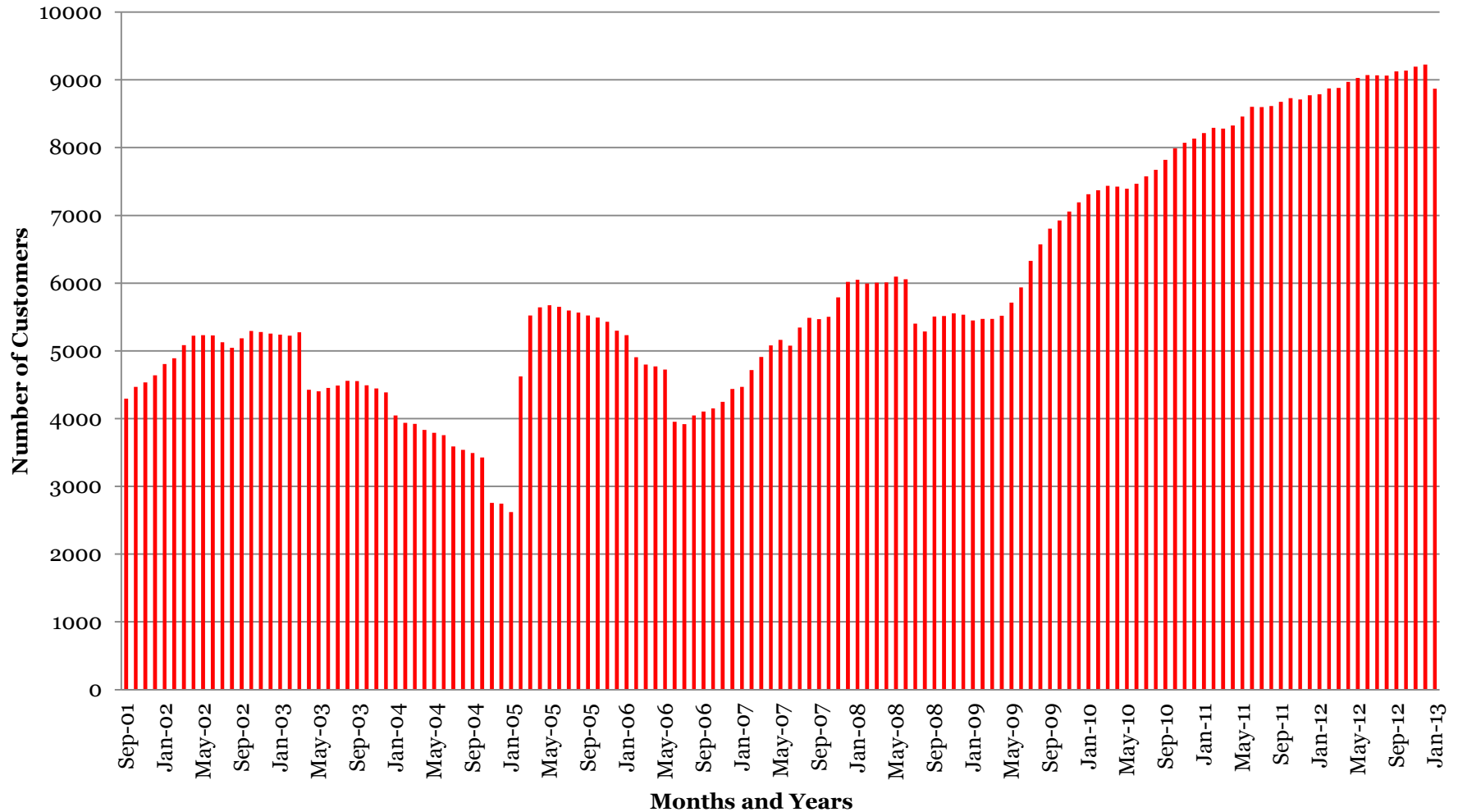
Source: C&P/Bell Atlantic/Verizon and DC Energy Office's Reports, filed in F.C. No. 827 and available on Public Service Commission of the District of Columbia's website at <http://www.dcpsc.org>.

RESIDENTIAL ELECTRICITY CUSTOMERS WHO CHOSE AN ALTERNATIVE GENERATION SUPPLIER 2001-2013



Source: Pepco's monthly market monitoring reports filed in F.C. No. 945 and available on Public Service Commission of the District of Columbia's website at <http://www.dcpsc.org>.

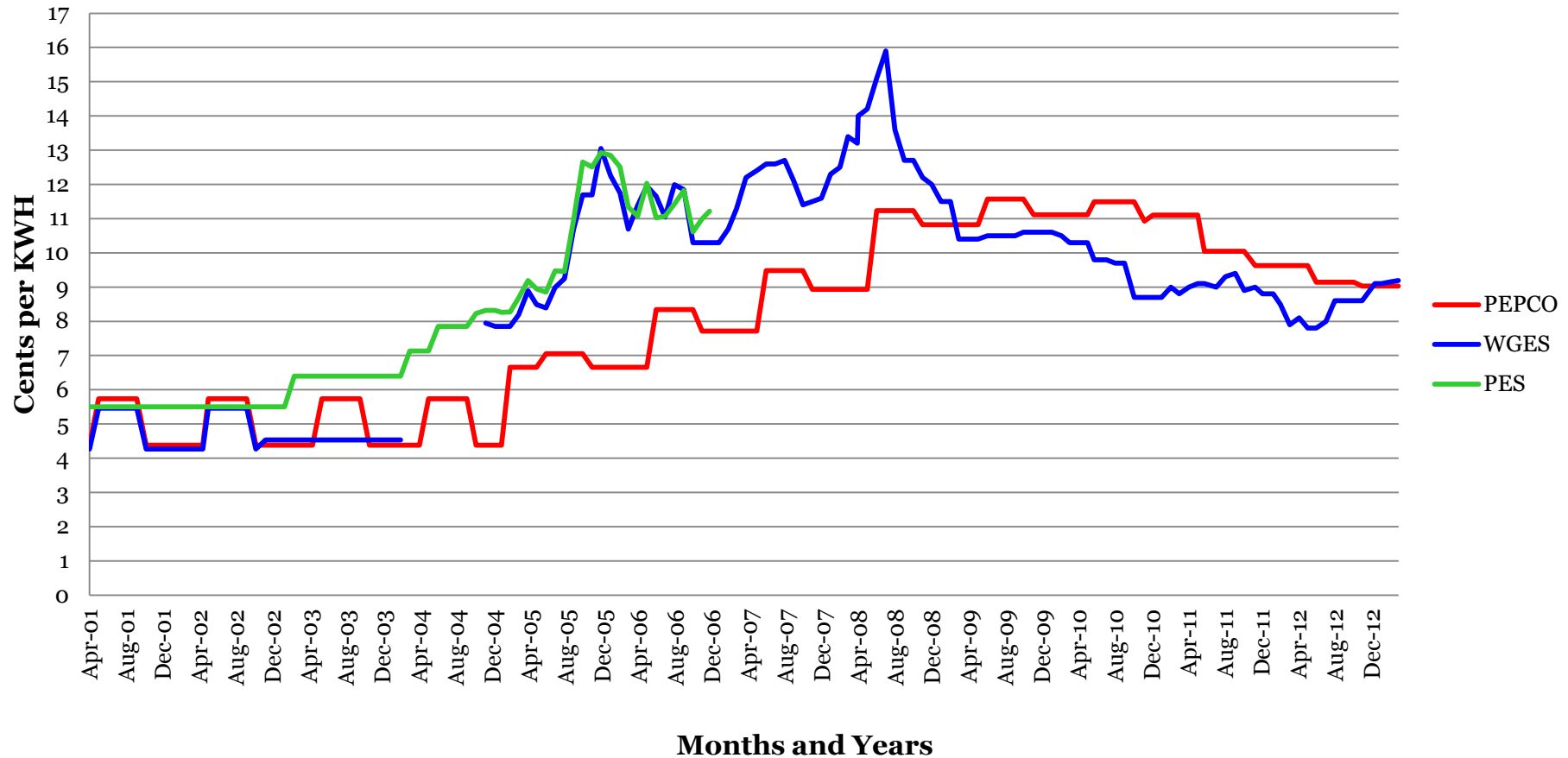
COMMERCIAL ELECTRICITY CUSTOMERS WHO CHOSE AN ALTERNATIVE GENERATION SUPPLIER 2001-2013



Source: Pepco's monthly market monitoring reports filed in F.C. No. 945 and available on Public Service Commission of the District of Columbia's website at www.dcpssc.org.

ELECTRIC RATE COMPARISON: PEPCO vs. WGES and PES

2001-2013
(cents per kWh)

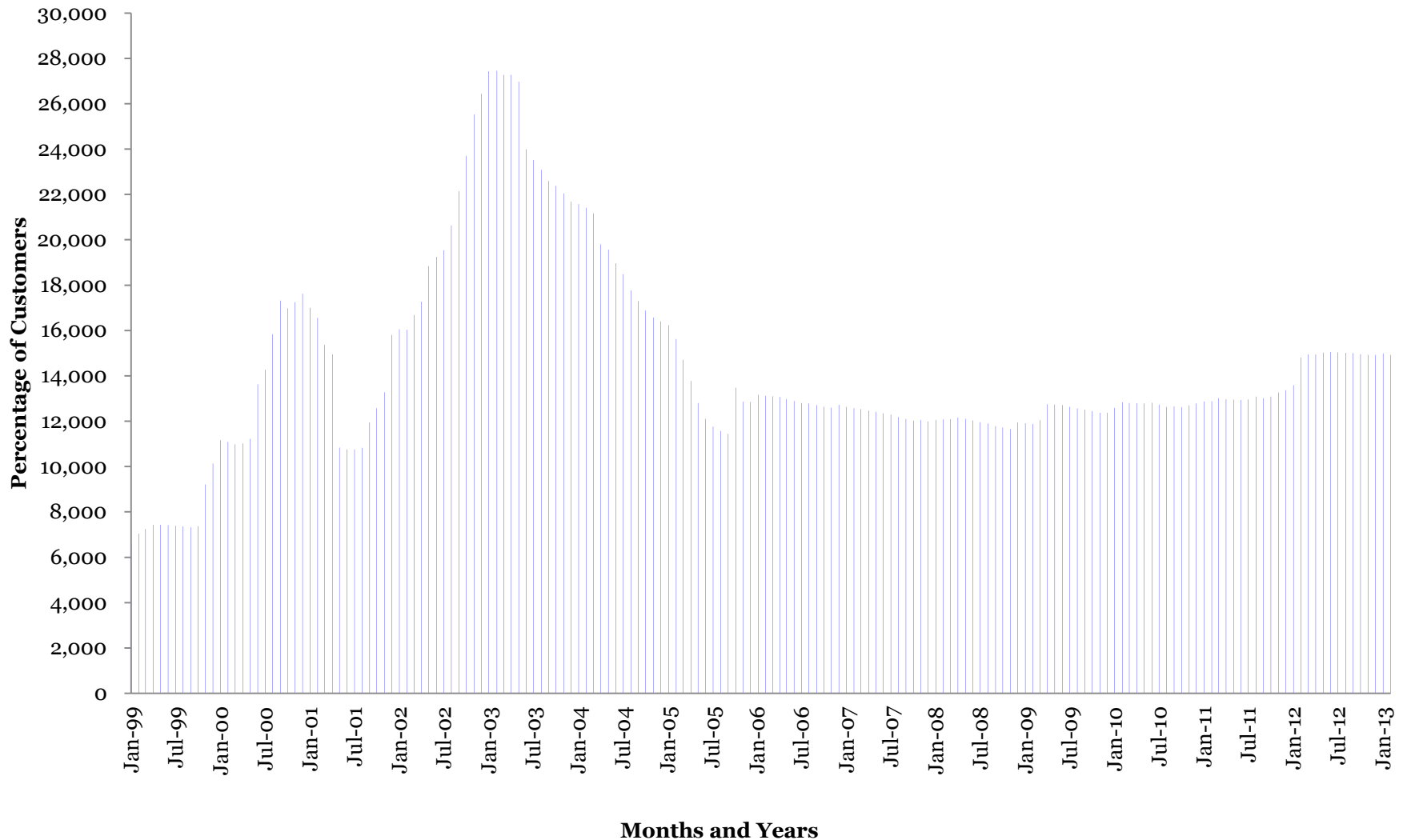


WGES – Washington Gas Energy Services

PES – Pepco Energy Services

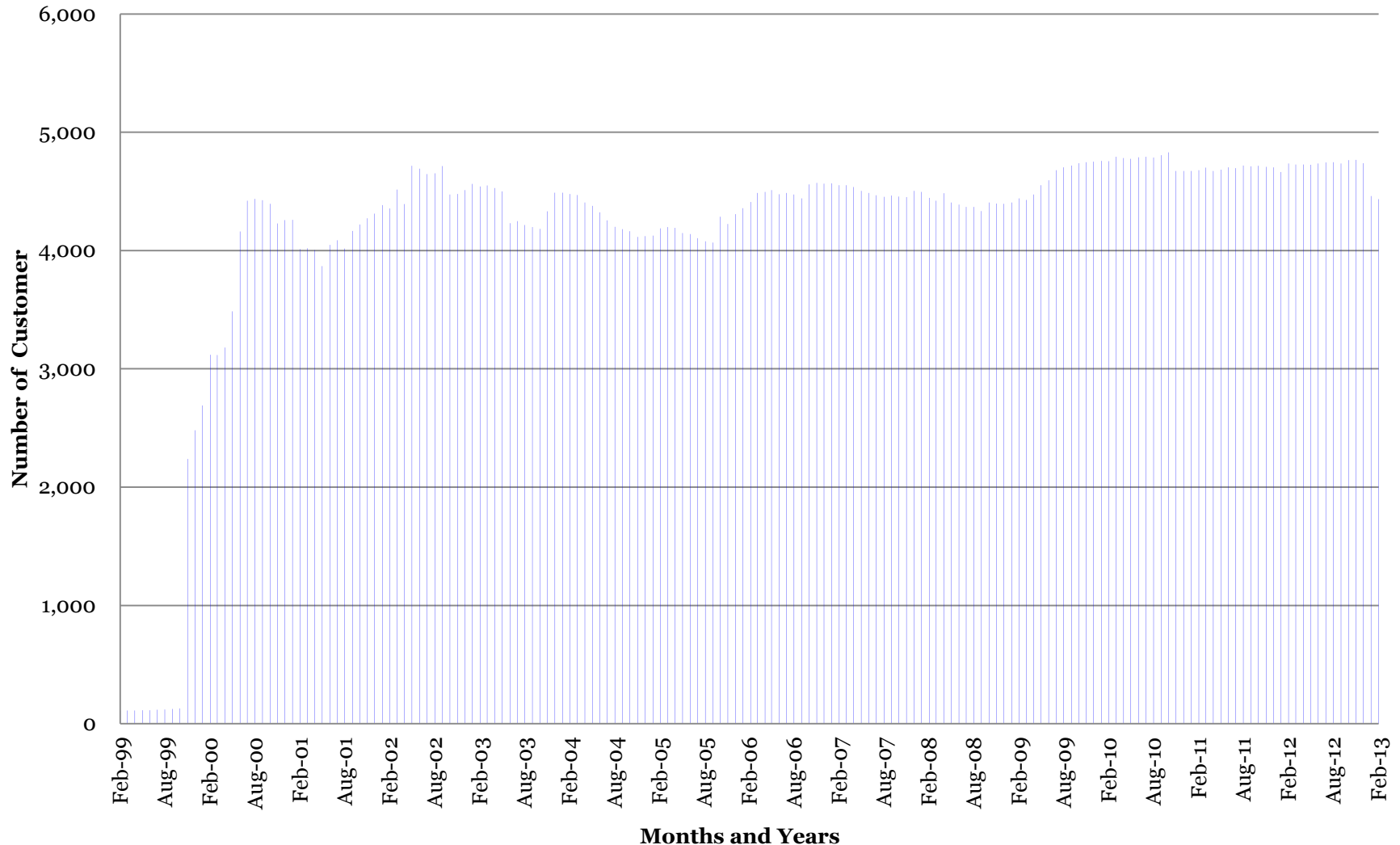
Source: Electric customer choice data available on Public Service Commission of the District of Columbia's website at <http://www.dcpsc.org>.

RESIDENTIAL NATURAL GAS CUSTOMERS WHO CHOSE AN ALTERNATIVE COMMODITY GAS SUPPLIER 1999-2013



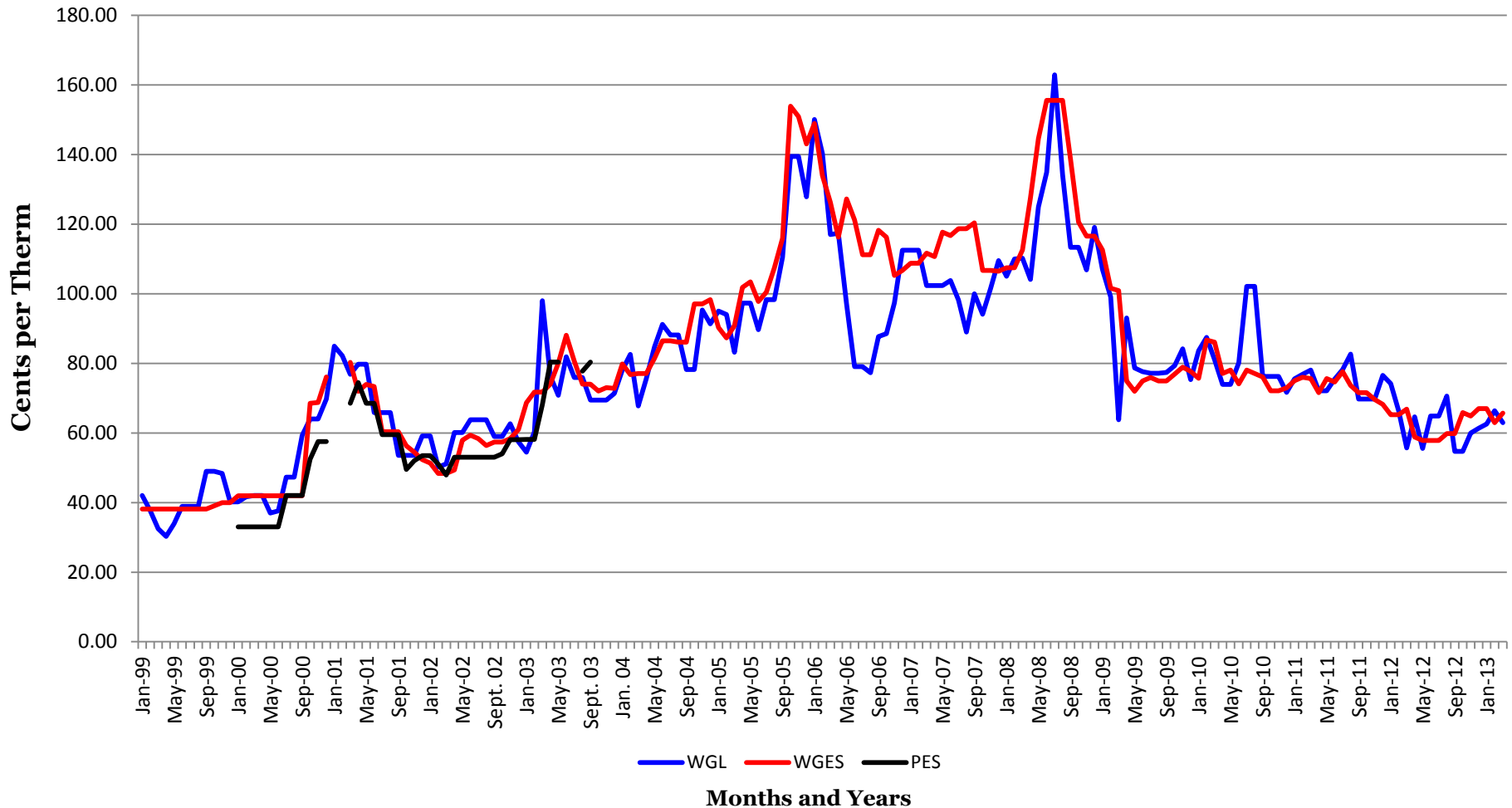
Source: WGL's monthly market monitoring reports filed in GT 96-2 and available on Public Service Commission of the District of Columbia's website at <http://www.dcpsc.org>.

COMMERCIAL NATURAL GAS CUSTOMERS WHO CHOSE AN ALTERNATIVE COMMODITY GAS SUPPLIER 1999-2013



Source: WGL's monthly market monitoring reports filed in GT 96-2 and available on Public Service Commission of the District of Columbia's website at <http://www.dcpsc.org>.

COMMODITY GAS RATES: WGL vs WGES and PES 1999-2013 (cents per therm)

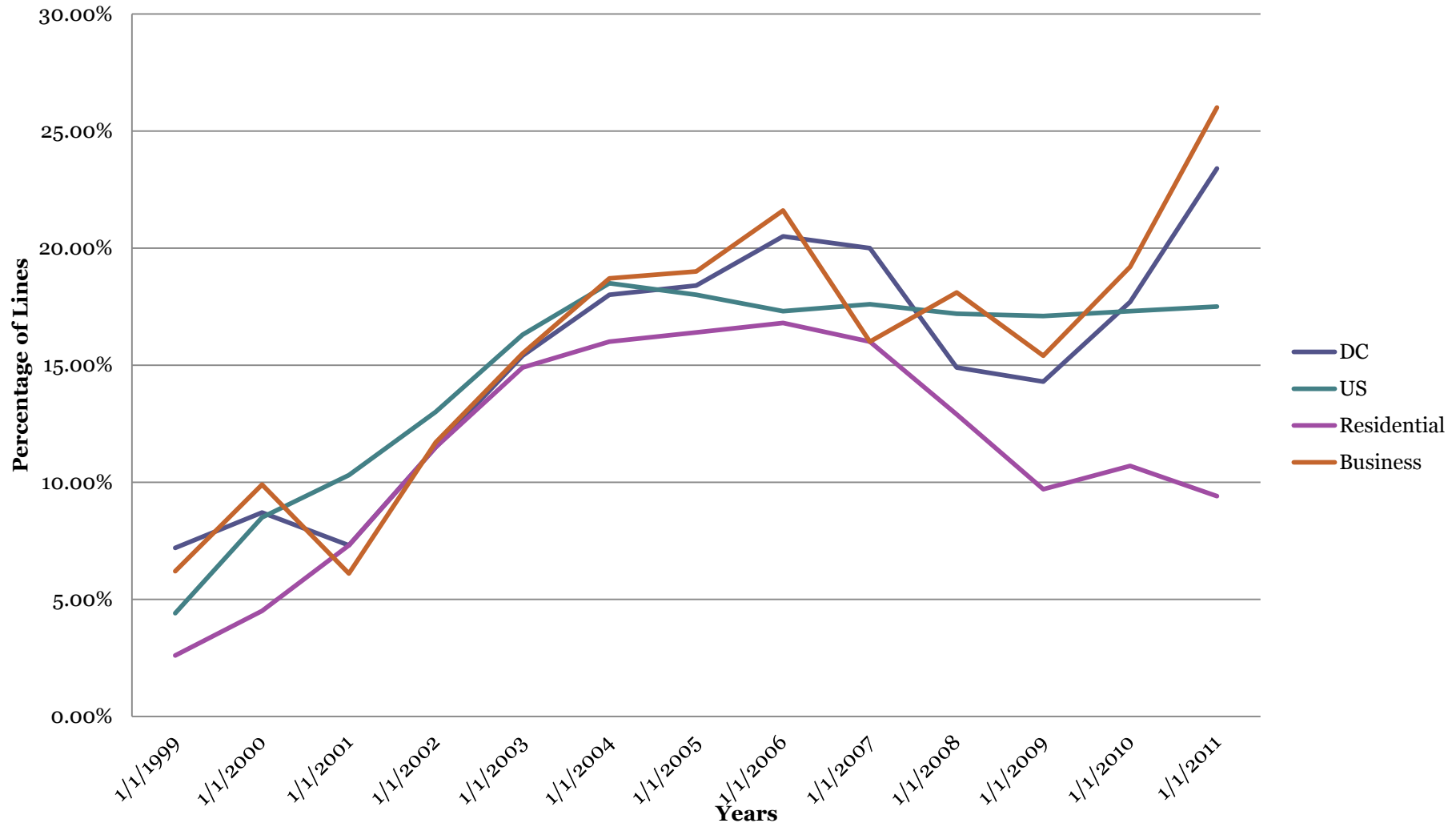


WGES – Washington Gas Energy Services

PES – Pepco Energy Services

Source: Natural gas customer choice data available on Public Service Commission of the District of Columbia's website at <http://www.depsc.org>.

CLECS' SHARE OF LINES 1999-2011

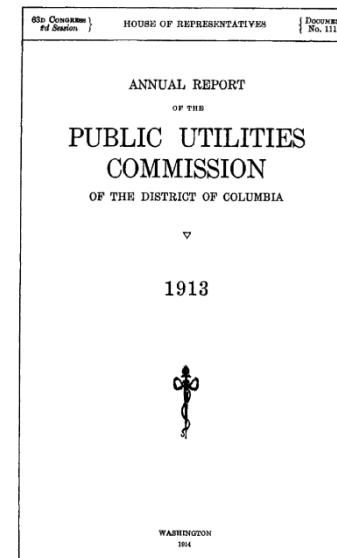


Source: DC PSC Annual Reports from 2002 to 2011 available on PSC's website at www.dcpsc.org.

EDUCATING AND INFORMING THE PUBLIC

1913 - 2013

- Annual Reports
- Mailed Notices to Citizen Groups
- Meetings with Civic Groups
- Community Hearings
- Fact Sheets and Brochures
- District Government Television
- Radio Ads
- Joint Utility Discount Day (JUDD)
- Take It To the Streets Campaign
- Videos
- Website
- Press Releases
- Media Streaming
- Mobile App





Public Service Commission of the District of Columbia

Public Service for a Century

38

THANK YOU CREDITS!

Office of Commission Secretary	Marvin Briggs, Carmen Davis, Stacey Durham, Alphonzo Harris, Brinda Westbrook-Sedgwick, Christopher Starks, Dorothy Wideman- Davis
Office of Human Resources	Benita Anderson Sophia Pryce Natalie Taylor
Office of Consumer Services	Kellie Armstead Damon Patterson
Office of the Executive Director	Aminta Daves Issaya Whitesides (Intern)
Office of Technical & Regulatory Analysis	Brian Doherty Dr. Roger Fujihara Dr. Grace Hu Felix Otiji Timour Skrynnikov
Office of the Chairman	Betty Ann Kane
Office of the Commissioner	Joanne Doddy Fort