

ESSENTIAL PARTNERS AND GLOBAL TRENDS FOR NEW POST GRADUATE PROGRAMS IN TELCO POLICY AND REGULATION

**Presentation Before the Workshop On
NetTel@Africa For Nigerian Universities
Held In Abuja Nigeria
February 26-27, 2003**

**Dr. Joseph K. Nwude
District Of Columbia Public Service
Commission
Washington, DC USA**

INTRODUCTION

Given that the broad objective of the workshop is to lay the foundation for a collaborative development and implementation of special Post Graduate Programs (Masters and Diplomas) in Nigerian Universities, this paper focuses on identifying potential partners and a discussion of their functions and roles, with some examples of performance in Africa, Eastern Europe and the United States.

INTRODUCTION

Several types of partnerships have formed, and are forming, at several levels within and across countries, regions, and continents for capacity building, expansion, and knowledge exchange in the Telecommunications sector, including Telecommunications Policies and Regulations. One reason for a partnership track is the recognition of the benefits of exchanging ideas, sharing knowledge and information, borrowing from proven successes and failures, and broad cross-fertilization that derive from joint effort.

ESSENTIAL POTENTIAL PARTNERS

PARTNERS ARE DRAWN FROM THE FOLLOWING SECTORS:

- 1. UNIVERSITY SECTOR**
- 2. PUBLIC SECTOR (GOVERNMENT AGENCIES AND MINISTRIES)**
- 3. REGULATORY COMMUNITY AND AFFILIATED TRAINING INSTITUTIONS**
- 4. INDUSTRY GROUPS**

POTENTIAL PARTNERS ARE DRAWN FROM THE FOLLOWING SECTORS:

1. UNIVERSITY SECTOR

- NIGERIAN UNIVERSITIES
- AFRICAN UNIVERSITIES
- AMERICAN AND EUROPEAN
UNIVERSITIES

POTENTIAL PARTNERS ARE DRAWN FROM THE FOLLOWING SECTORS:

2. PUBLIC SECTOR (GOVERNMENT AGENCIES AND MINISTRIES)

- MINISTRIES OF COMMUNICATIONS AND EDUCATION
- US NATIONAL TELECOMMUNICATIONS AND INFORMATION ADMINISTRATION (NTIA)
- USAID
- ITU
- LEGISLATORS

POTENTIAL PARTNERS ARE DRAWN FROM THE FOLLOWING SECTORS:

3. REGULATORY COMMUNITY AND AFFILIATED TRAINING INSTITUTIONS

- NCC
- FEDERAL COMMUNICATIONS COMMISSION (FCC)
- US NATIONAL ASSOCIATION OF REGULATORY UTILITY COMMISSIONERS (NARUC)
- INSTITUTE OF PUBLIC UTILITIES, (IPU, CAMP NARUC AT MICHIGAN STATE UNIVERSITY)
- TELECOMMUNICATIONS REGULATORS ASSOCIATION OF SOUTHERN AFRICA (TRASA)

POTENTIAL PARTNERS ARE DRAWN FROM THE FOLLOWING SECTORS:

3. REGULATORY COMMUNITY AND AFFILIATED TRAINING INSTITUTIONS (CONTD.)

- NATIONAL REGULATORY RESEARCH INSTITUTE (NRRI) AT OHIO STATE UNIVERSITY
- CENTER FOR PUBLIC UTILITIES, NARUC BASIC TRAINING AT NEW MEXICO STATE UNIVERSITY
- PUBLIC UTILITY RESEARCH CENTER (PURC) AT UNIVERSITY OF FLORIDA
- STATE PUBLIC UTILITY COMMISSIONS:
DISTRICT OF COLUMBIA PUBLIC SERVICE COMMISSION, OREGON PUBLIC SERVICE COMMISSION

POTENTIAL PARTNERS ARE DRAWN FROM THE FOLLOWING SECTORS:

4. INDUSTRY GROUPS

- US TELECOMMUNICATION TRAINING INSTITUTE (USTTI)
- AFRICAN ADVANCED LEVEL TELECOMMUNICATIONS INSTITUTE (AFRALTI)
- TELECOMMUNICATIONS INDUSTRY ASSOCIATION (TIA)
- ALLIANCE FOR TELECOMMUNICATIONS INDUSTRY SOLUTIONS (ATIS)
- ELECTRONIC INDUSTRIES ASSOCIATION (EIA)

THE PARTNERS CAN BE
CLOISTERED BY NATIONALITY
AND GROUPED BY
ANTICIPATED PRIMARY
RESPONSIBILITIES AS
FOLLOWS:

1. NIGERIAN AND AFRICAN UNIVERSITIES

- MAJOR RESPONSIBILITY FOR CURRICULUM DEVELOPMENT AND IMPLEMENTATION, DEVELOP TEACHING AND RESEARCH PROGRAMS

2. RESOURCE PARTNERS --- PEER TO PEER INVOLVEMENT

- NCC, TRASA, AFRALTI, NARUC, DCPSC, OPSC---, ASSIST IN PROGRAM, CURRICULUM, AND STANDARDS DEVELOPMENT, PEER TO PEER INVOLVEMENT, MAINTAIN DATABASE OF PROGRAMS AND EXPERTS

3. US AND FOREIGN UNIVERSITIES

- SERVE AS TEACHING PARTNERS,
PROVIDE ONLINE COLLABORATIVE
TEACHING AND RESEARCH, ASSIST IN
COURSE DEVELOPMENT

4. RESOURCE PARTNERS FINANCIAL AND TEACHING

- FCC, NTIA, NARUC, USTTI, TIA, ATIS, EIA NRRI, IPU, PRIVATE SECTOR, USAID---, PROVIDE FINANCIAL AND HUMAN RESOURCES, PEER TO PEER INVOLVEMENT, SHORT TERM INTENSIVE TEACHING INVOLVEMENT

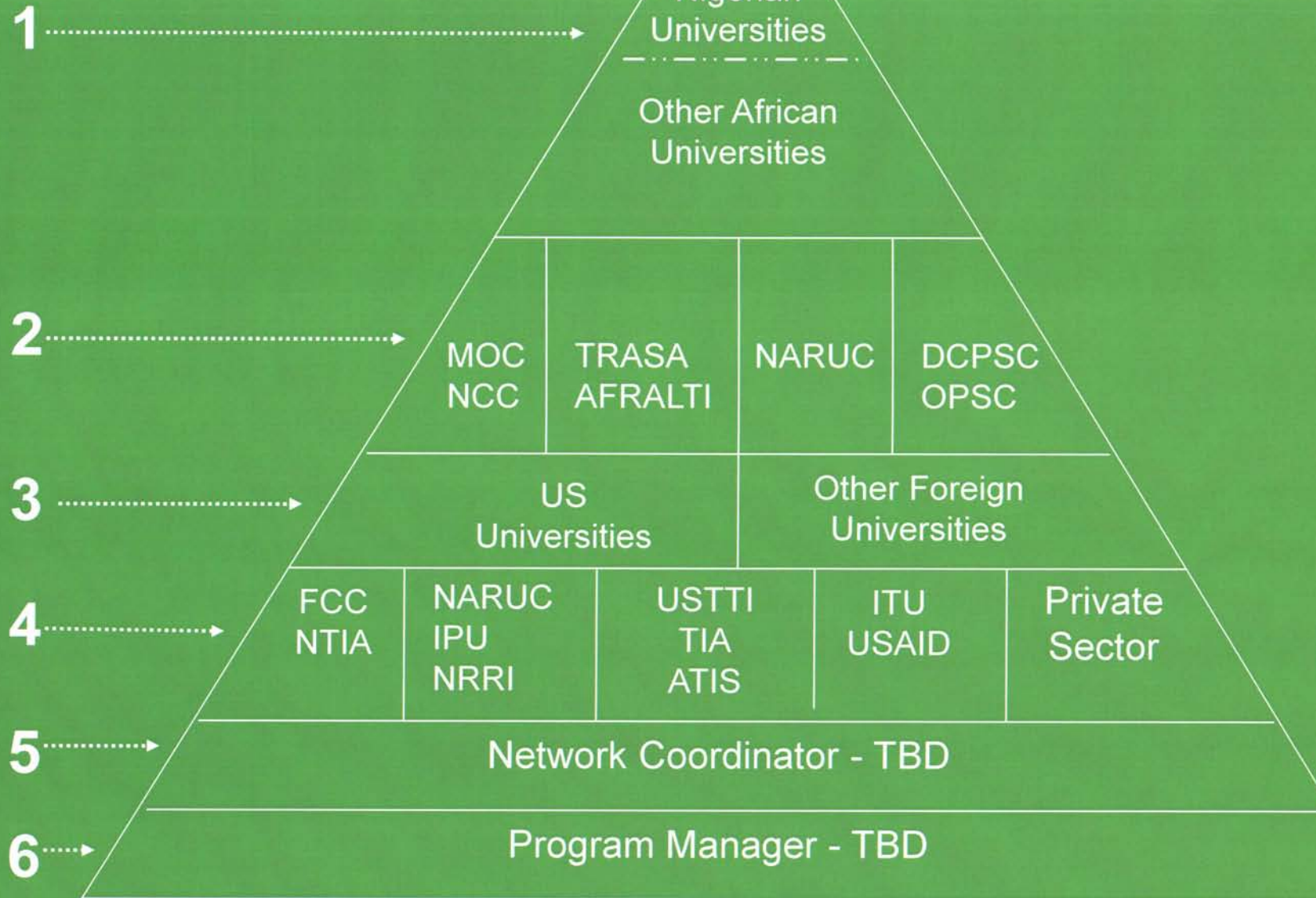
5. NETWORK COORDINATION

- COORDINATE RECIPROCAL AGREEMENTS, MAINTAIN DATABASE OF STUDIES
(A NIGERIAN UNIVERSITY TBD)

6. PROGRAM MANAGEMENT

- OVERALL PROGRAM MANAGEMENT,
FINANCIAL MANAGEMENT (AN
AMERICAN UNIVERSITY TBD)

Potential Partners



Abbreviations & Acronyms

AFRALTI ~	African Advanced Level Telecommunications Institute (S. Africa)
ATIS ~	Alliance for Telecommunications Industry Solutions (USA)
CBDD~	Center to Bridge the Digital Divide (Washington State University – USA)
DCPSC ~	District of Columbia Public Service Commission (USA)
EIA ~	Electronic Industries Association (USA)
FCC ~	Federal Communications Commission (USA)
IPU ~	Institute of Public Utilities (USA)
ITU ~	International Telecommunications Union (Global)
MOC ~	Ministry of Communications (Nigeria)

Abbreviations & Acronyms

MOE ~	Ministry of Education (Nigeria)
NARUC ~	National Association of Regulatory Utility Commissions (USA)
NRRI ~	National Regulatory Research Institute (USA)
NTIA ~	National Telecommunications and Information Administration (USA)
OPSC ~	Oregon Public Service Commission (USA)
TIA ~	Telecommunications Industry Association (USA)
TRASA ~	Telecommunications Regulators Association of Southern Africa (S. Africa)
USAID ~	U.S. Agency for International Development
USTTI ~	U.S. Telecommunications Training Institute

Essential Partners & Tasks

The next series of charts show the essential partners grouped according to their anticipated functions. These functions are offered for further discussion.

Partners & Functions



Partners & Functions

Peer to Peer Resource Partners
(NCC, TRASA, NARUC)

Assist in
Program
Development

Assist in
Curriculum
Development

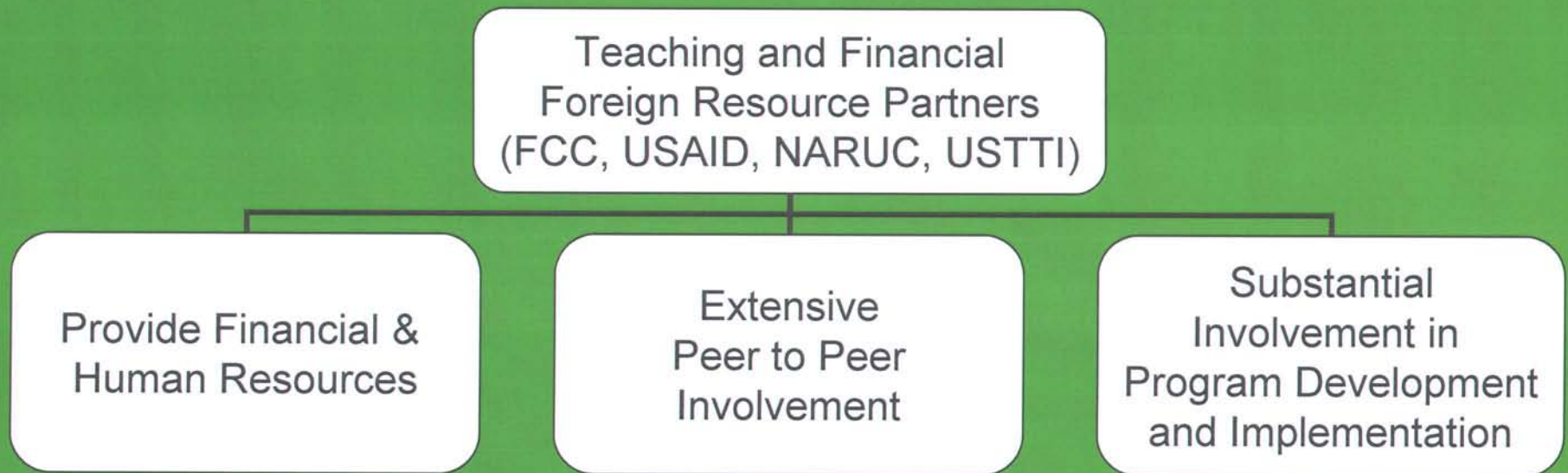
Develop
Standards for the
Diploma, MSC
Degrees

Extensive
Peer to Peer
Involvement

Partners & Functions



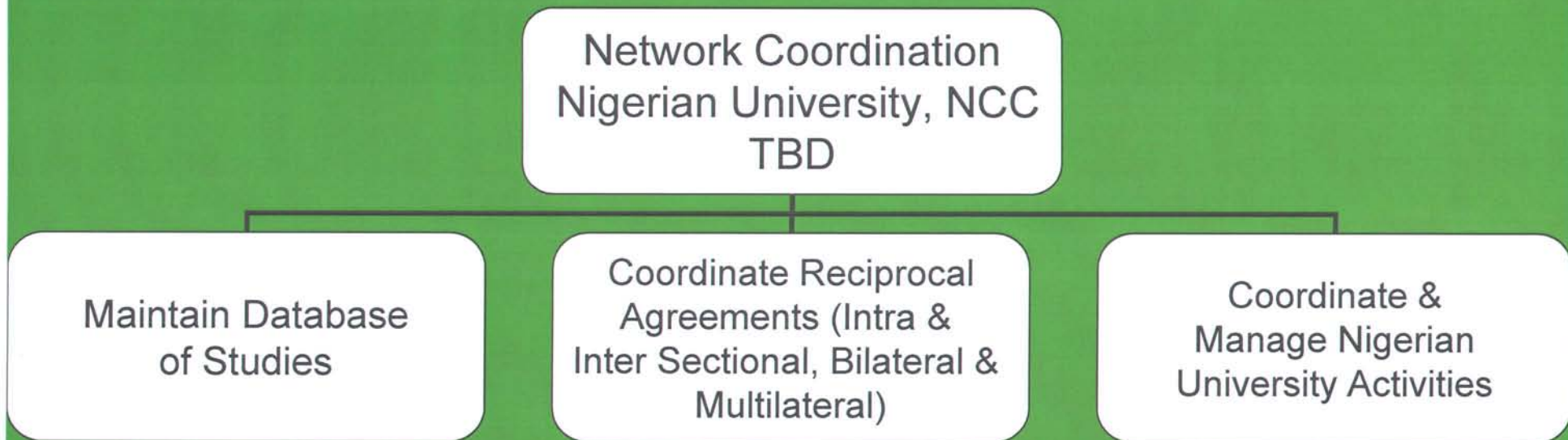
Partners & Functions



Partners & Functions



Partners & Functions



An Example of a Working Partnership

National Association of Regulatory Utility Commissioners (NARUC):

- A non-profit organization founded in 1889. Members include governmental agencies that regulate utilities and carriers.
- NARUC has successfully assisted regulators in creating regional associations, information exchange programs on regulatory practices in select regions of the world.
- Energy - Central/Eastern Europe & Eurasia
- In 1998, NARUC entered into a multi-year cooperative agreement with the U.S.AID
 - Coordinate information exchange among the new energy regulators in CEE/Eurasia
 - Assist in establishing an association.
 - In early 2001, an association of 15 members was registered in Budapest, Hungary. Currently, 23 members from 20 countries.

An Example of a Working Partnership (Contd.)

- ***Energy Regulatory Partnerships***

NARUC implements regulatory partnerships between:

- Iowa Utility Board and Moldova
- New Jersey Board of Public Utilities and Bulgaria
- Indiana Utility Regulatory Commission and Albania
- New York Public Service Commission and Croatian
- District of Columbia Public Service Commission and India (US Energy Administration)
- The Maryland Public Service Commission and Ghana (US Energy Administration)

Global Regulatory Network

In September 2002, NARUC entered into a new three-year Cooperative Agreement with USAID.

Objective: Create a forum for Regulators from the developing world to share challenges and best practices with each other and their US counterparts.

Focus initially on Southern Africa and West Africa

NARUC's Role: Help arrange conferences, technical meetings, and opportunities for training, develop websites etc, and assist regional regulatory associations in their development.

- In August 2001, NARUC sponsored 2 staff members of the Zambian Energy Regulatory Board to Camp NARUC
- In November 2001, NARUC sponsored 2 staff members of the National Electricity Regulator of South Africa to the NARUC Annual Convention in Philadelphia
- In November 2002, NARUC joined the Washington State University's Center to Bridge the Digital Divide (Under the Directorship of Dr. Beebe) NARUC works with WSU and other team members to develop an effective peer-to-peer component, utilizing US Regulatory Commissions

Regulatory Expertise

The Commissioners and Staff of NARUC's member state public utility commissions (including yours truly) are actively engaged in NARUC's activities around the world.

Affiliates

In addition to active Commissioners and Staff, NARUC draws upon experts from its affiliated training institutions. NARUC endorses the following affiliates:

- Public Utility Research Center (PURC) (University of Florida)
- Camp NARUC at the Institute of Public Utilities (Michigan State University)
- National Regulatory Research Institute (NRRI) Ohio State University
- NARUC Utility Rate Schools
- Center for Public Utilities NARUC Basic Training (New Mexico State University)

Continuing Education Schedule(2003)

NARUC Utility Rate Schools

- 22nd Annual Western Utility Rate School
May 11 - 16, 2003, Coronado Island Marriott Resort,
San Diego, CA
- 31st Annual Eastern Utility Rate School
September 21 - 26, 2003, Radisson Suite Resort,
Sand Key, Clearwater, FL.

Michigan State University Institute of Public Utilities

- International Workshop
August 1 - 3, 2003, Michigan State University, East
Lansing
- 45th Annual Regulatory Studies Program: Camp NARUC
August 3 - 15, 2003, Kellogg Hotel & Conference
Center, MSU Campus, East Lansing, MI

Center for Public Utilities (New Mexico State University)

- Practical Skills for A Changing Utility Industry: The Basics
October 19 - 24, 2003

National Regulatory Research Institute (NRRI) (at Ohio State University)

- NRRI Commissioner's Tutorial
- see also the NRRI's Online Newsletter

Public Utility Research Center (PURC) (University of Florida)

- Thirteenth International Training Program on Utility
Regulation and Strategy
January 13 - 24, 2003, Gainesville, FL.